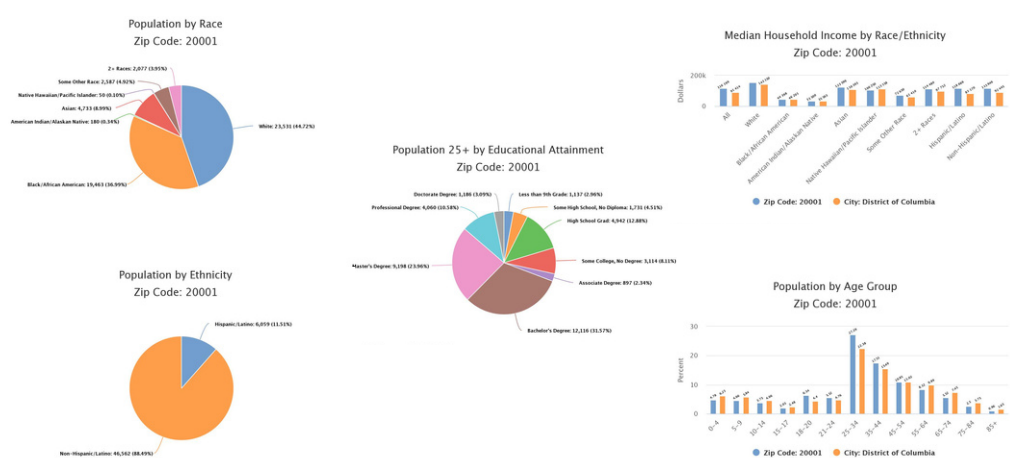


SHAW COMMUNITY



HOWARD UNIVERSITY



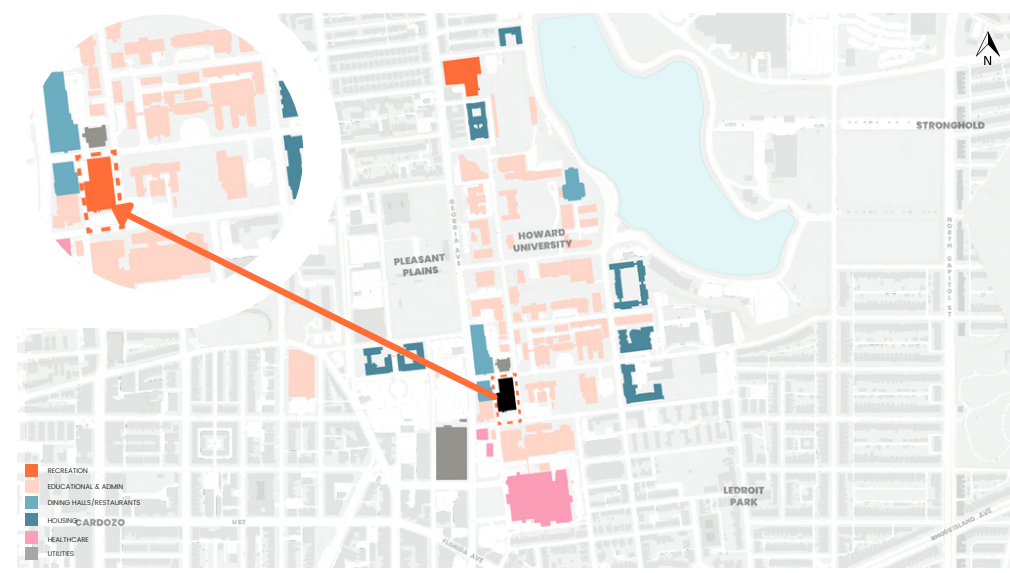
DEMOGRAPHICS OF SHAW  
<https://www.dchealthmatters.org/demographicdata?id=9401>



CIRCULATION DENSITY DIAGRAM - HOWARD COMMUNITY



CIRCULATION DENSITY DIAGRAM - SHAW COMMUNITY



BUILDING USE DIAGRAM



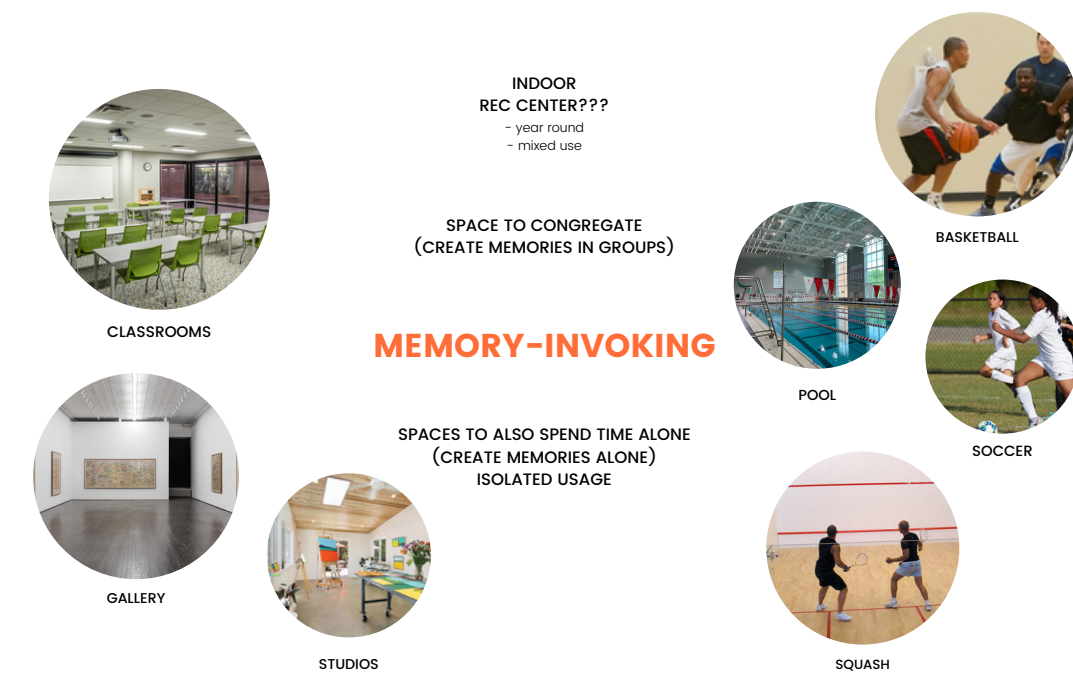
S.H.A.R.C. :

# THE SHAW HOWARD ATHLETIC AND RECREATION CENTER

## AGENDA

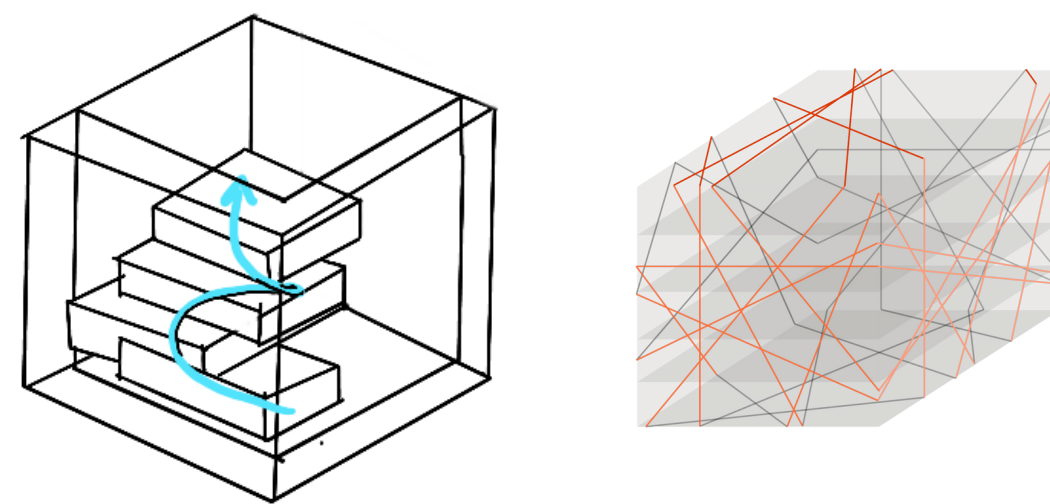
Howard University's students and members of the Shaw community suffer from a lack of indoor recreation. The developments on the site will serve as recreation center for students and members of the Shaw community alike. This building will work to serve both parties in more ways by featuring a distinct community mixed-program. This university building will begin to serve as a monument to Howard University's connection to the surrounding public, as it provides recreation and fosters a sense of community amongst the students, and locals.

This design will feature sports, community artistic and educational spaces.



### MEMORY-INVOKING

SPACES TO ALSO SPEND TIME ALONE  
(CREATE MEMORIES ALONE)  
ISOLATED USAGE



### MONUMENTAL /MÄNYƏMEN(T)l/ adjective

great in importance, extent, or size  
of or serving as a monument

In this project, monumentality will begin to be defined by the memory and the transition of a space into a place giving a set area significance and meaning and memorable.

Though "monumental" can be in reference to size, the appreciation of something significant does not have to directly reference.

The dictionary synonymizes monumental with "commemorative and memorial," two words that can help guide the experience and design intent of this building

The building will inspire memorability through its architecture, as well as the uniqueness of its program, and the expression of the structural system.

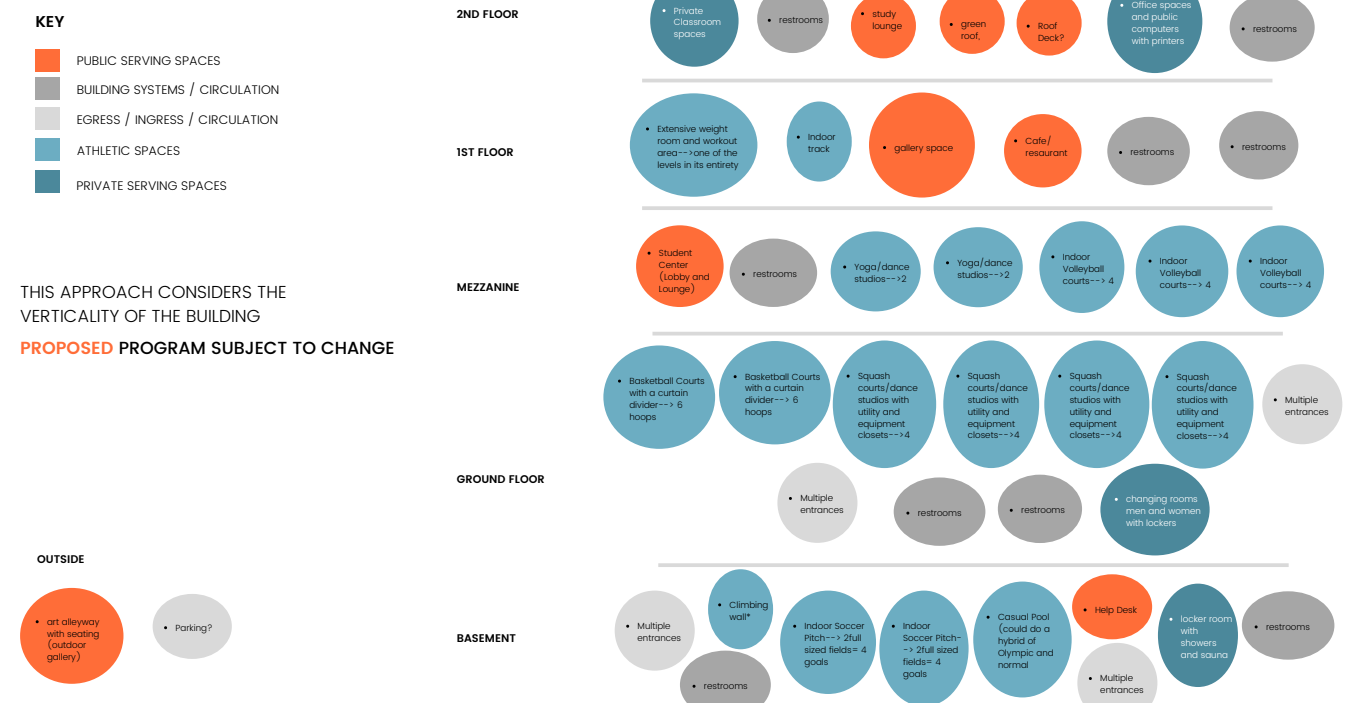
The building will begin to serve as a monument as the becomes important to the community's urban fabric, and displays a nuanced and expressive exterior.

Celebratory architecture system  
 Memorial in its statuesque quality or appearance  
 Monumental in its augmentation of the Howard University Masterplan  
 We are accessing a more metaphorical application of the word monument, to accompany a literal one

MAX BUILDABLE AREA	222,576.20 SF
USED AREA	218,061.72 SF
REMAINING	8,514.48 SF

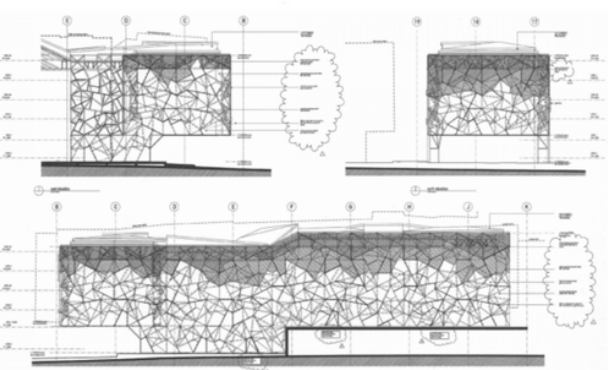
LOBBY/ENTRY SPACES	SPORTS	EDUCATIONAL/ACADEMIC SUPPORT
MAIN LOBBY	BASKETBALL	UNIVERSITY CLASSROOMS (25P)
SECONDARY LOBBY	VOLLEYBALL	UNIVERSITY CLASSROOMS (40P)
TERTIARY LOBBY	SQUASH COURT	LECTURE ROOMS (30P)
ADMINISTRATIVE OFFICES	TRACK	LECTURE ROOMS (60P)
ARTS	SOCCER	OFFICES
AUDITORIUM	BOCCET COURT	RECREATIONAL CLASSROOMS (25P)
DRESSING ROOMS	OLYMPIC POOL	RECREATIONAL CLASSROOMS (40P)
STORAGE CLOSETS (PROPS & DESIGN)	CASUAL POOL	LECTURE ROOMS (30P)
STORAGE CLOSETS	YOGA STUDIO	LECTURE ROOMS (60P)
GALLERY	FITNESS CENTER	STUDY ROOMS (4P)
REHEARSAL STUDIO (PERFORMING ARTS)	WELLNESS	STUDY ROOMS (9P)
STUDIO SPACE (VISUAL ARTS)	ICE MACHINE/WATER FOUNTAIN	COMPUTER ROOM
ADDITIONAL PROGRAM	LOCKER ROOM (SHOWERS & SPA)	MULTIPURPOSE ROOM
CAFE / RESTAURANT	CHANGING ROOMS	
GROCERY	RESTROOMS	
	RESTROOMS	
	ROOF DECK	



### PROGRAM BUBBLE DIAGRAM

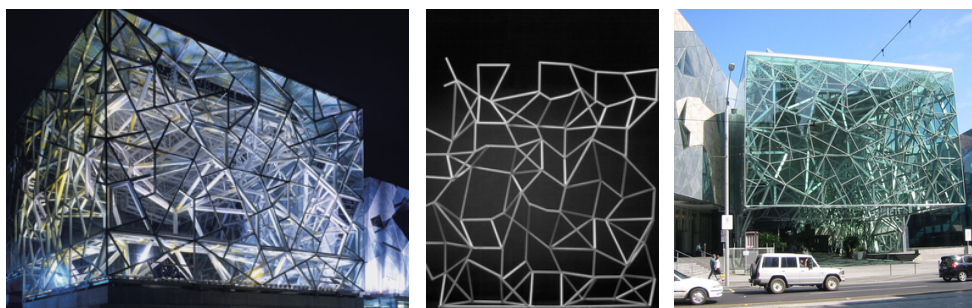


# PRECEDENT



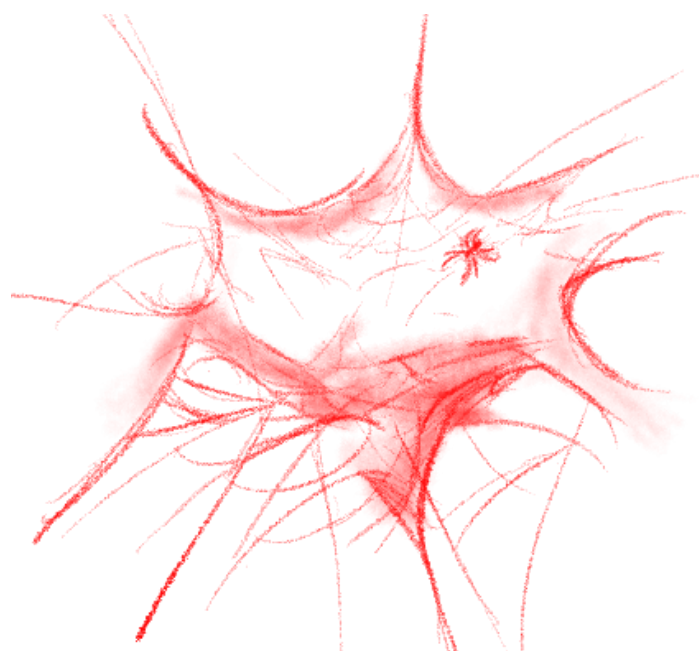
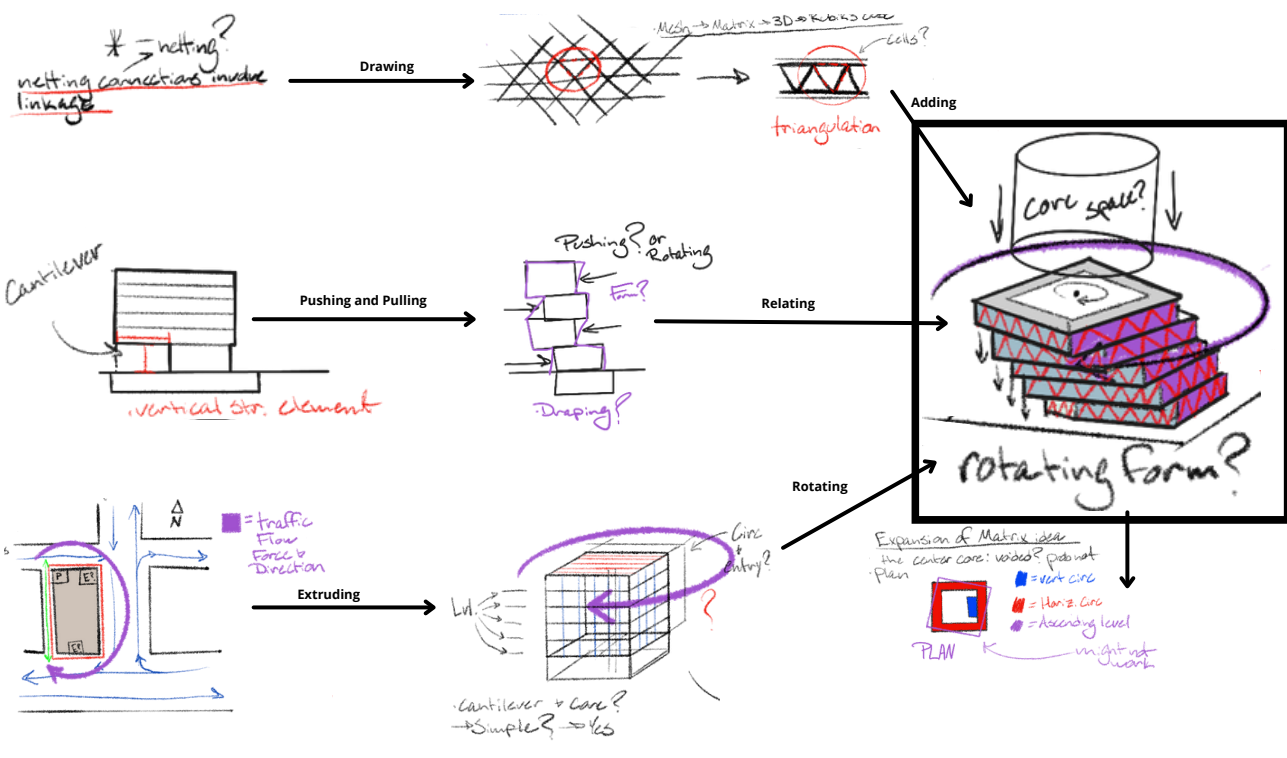
## Federation Square

Melbourne, AU  
Bates Smart and LAB Architecture Studio

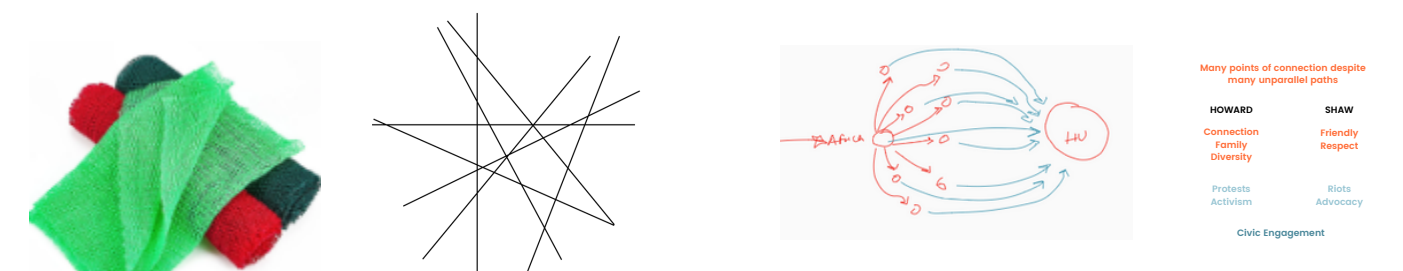


# CONCEPT DEVELOPMENT

## PARTI DEVELOPMENT



## PARTI DEVELOPMENT

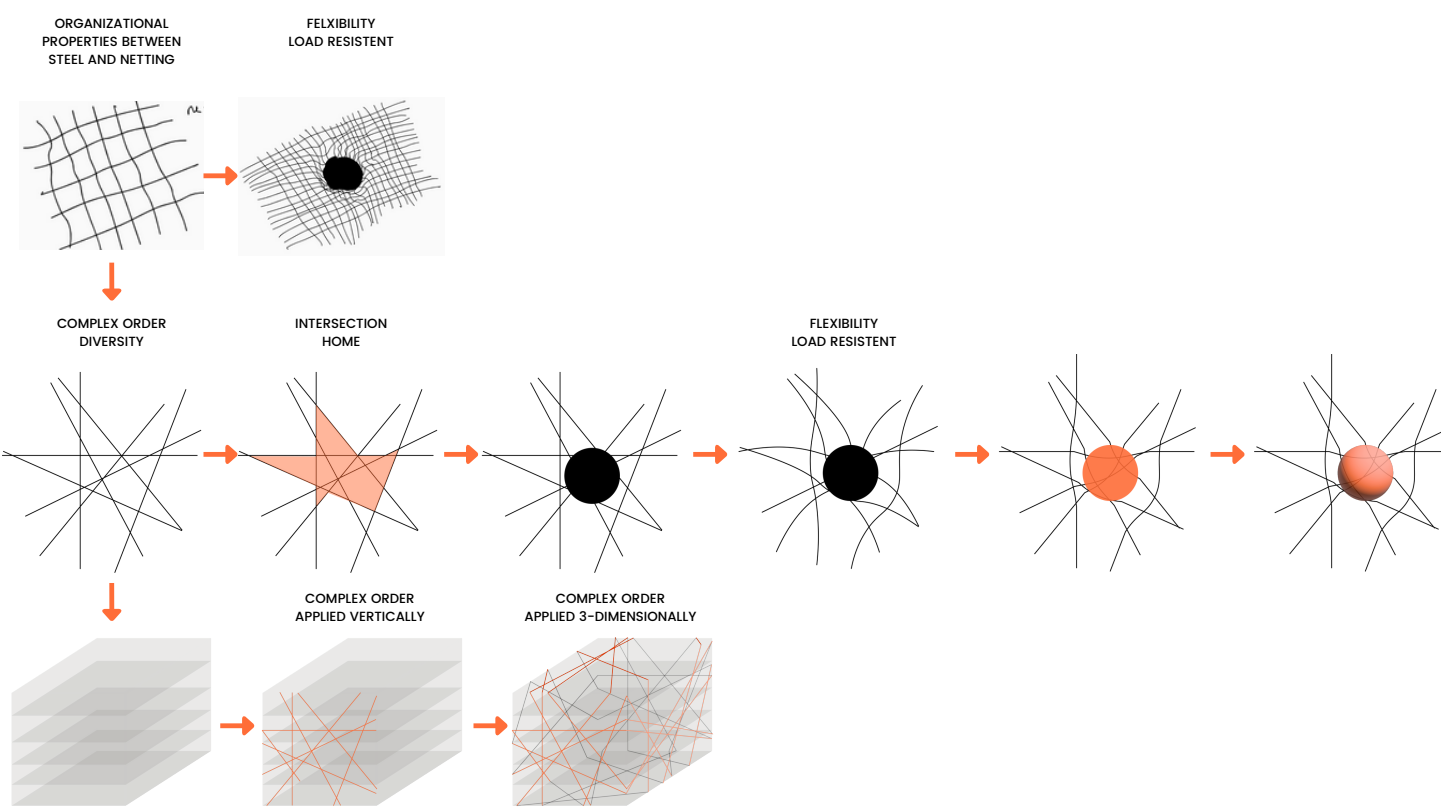


DESCRIPTORS/CHARACTERISTICS OF NETTING	DESCRIPTORS/CHARACTERISTICS OF STEEL	DESCRIPTORS/CHARACTERISTICS OF HOWARD	DESCRIPTORS/CHARACTERISTICS OF SHAW
Resistant to Tensile Load Open, Airy, Porous Adapts to changing form Resists Corrosion Clean, Crisp, Sharp	Resistant to Tensile Load Lightweight Maleable/Flexible Resists Corrosion Precision	Diversity in Blackness Connection Family Unorganized/Chaotic School for freed slaves Protests	Friendly Respect Freed Slave Encampment Riots

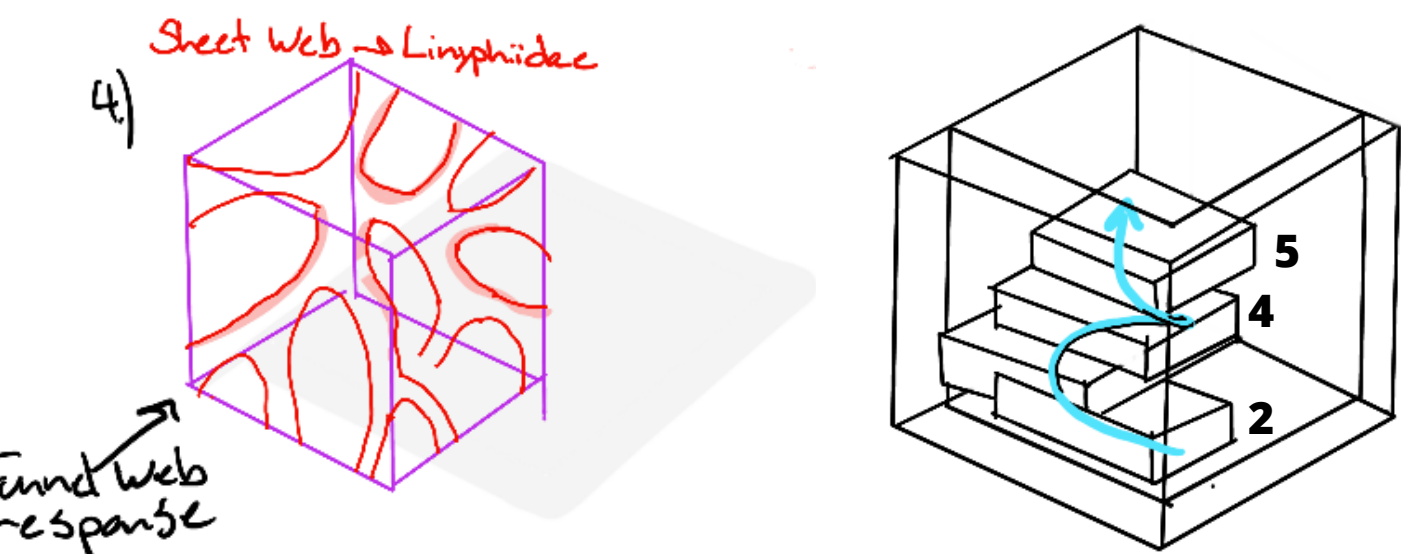
**DESCRIPTORS/CHARACTERISTICS OF NETTING AS IT RELATES TO STEEL, HOWARD, AND SHAW**

Can carry loads (tensile & dynamic)  
Nets have holes and are porous  
Can wrap around any loads  
Certain types of nets can resist germs, because its design allows for ventilation and proper drying (Clean, Crisp)

Each individual strand can represent connection between two people across two points (friendly)  
each strand can represent the different journeys people take to get to Howard (home)  
these strands and its vertices can represent meeting points/family gathering  
Nets catching/carrying an objects can represent the home attribute of community as well as Howard. This ties to Howard and Shaw's historical impact in housing/providing space for freed slaves during Reconstruction and onward.



## CONCEPTUAL DESIGN SKETCHING



Structural system--> based on funnel webbing and voidal approaches

## BIOMORPHIC APPROACH-THE SPIDER'S WEB

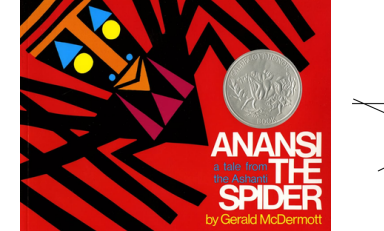
Structural Inspiration/Connection to African Culture  
An analysis of structures created by nature's premier architects.



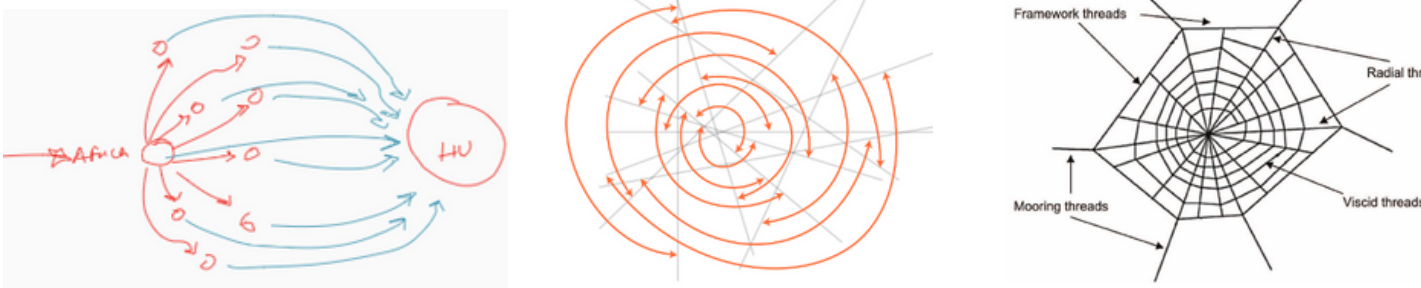
**Tangle web** spiders, also called **cobweb** spiders, chiefly belong to the family Theridiidae and are known for building **three-dimensional space webs**. Among them, the common house spider and the notorious black widow.

## BIOPHILLIC APPROACH

Anansi The Spider | Ashanti Folk Lore



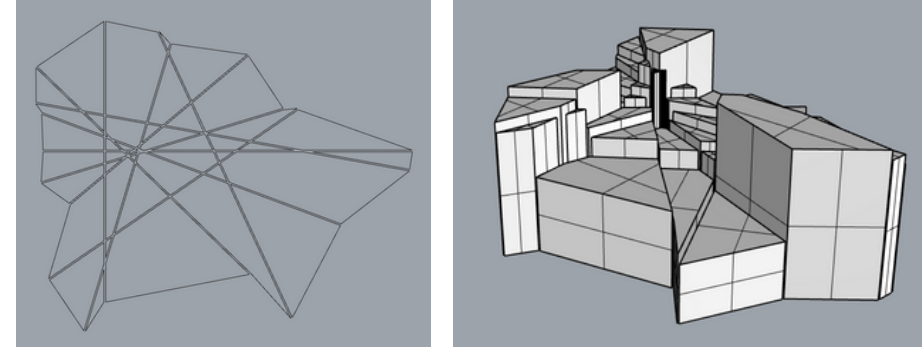
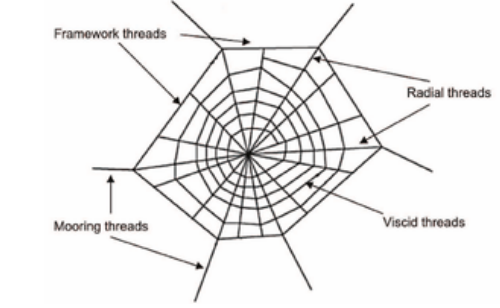
Anansi the Spider is one of the great folk heroes of the world. He is a rogue, a mischief maker, and a wise, lovable creature who triumphs over larger foes. In this traditional Ashanti tale, Anansi sets out on a long, difficult journey. Threatened by Fish and Falcon, he is saved from terrible fates by his sons. But which of his sons should Anansi reward? Calling upon Nyame, the God of All Things, Anansi solves his predicament in a touching and highly resourceful fashion. In adapting this popular folktale, Gerald McDermodt merges the old with the new, combining bold, rich color with traditional African design motifs and authentic Ashanti language rhythms.



**Relation of Spiders (Anansi the Spider) to the Diversity of Blackness on Campus and the African Diaspora**

- folklore definition: the traditional beliefs, customs, and stories of a community, passed through the generations by word of mouth
- This is a common way of passing on history along generations, all across the diaspora
- in the action of sharing history, it is often a cross-generational "event" that works to bring families and people closer together and to teach lessons. It strengthens connections amongst the present people as well as connections these people may have with their post/ancestors

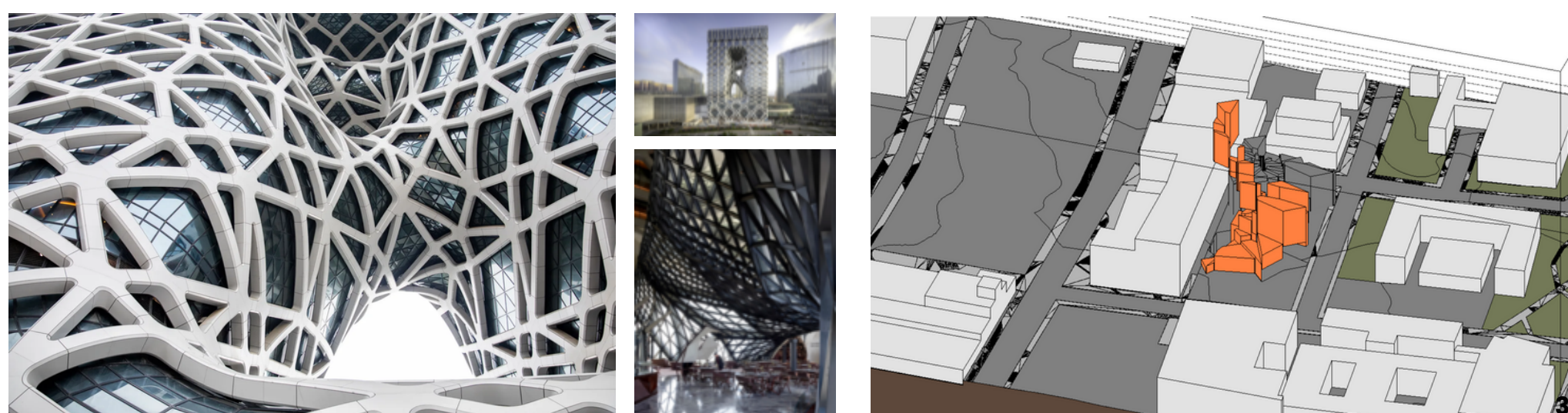
## CONCEPTUAL MASSING



## PRECEDENT

### Morpheus Hotel

Architects: Zaha Hadid Architects  
Area: 147860 m<sup>2</sup>  
Year: 2018  
Photographs: Ivan Dupont, Virgile Simon Bertrand  
Structural Engineering: Buro Happold, London/Hong Kong



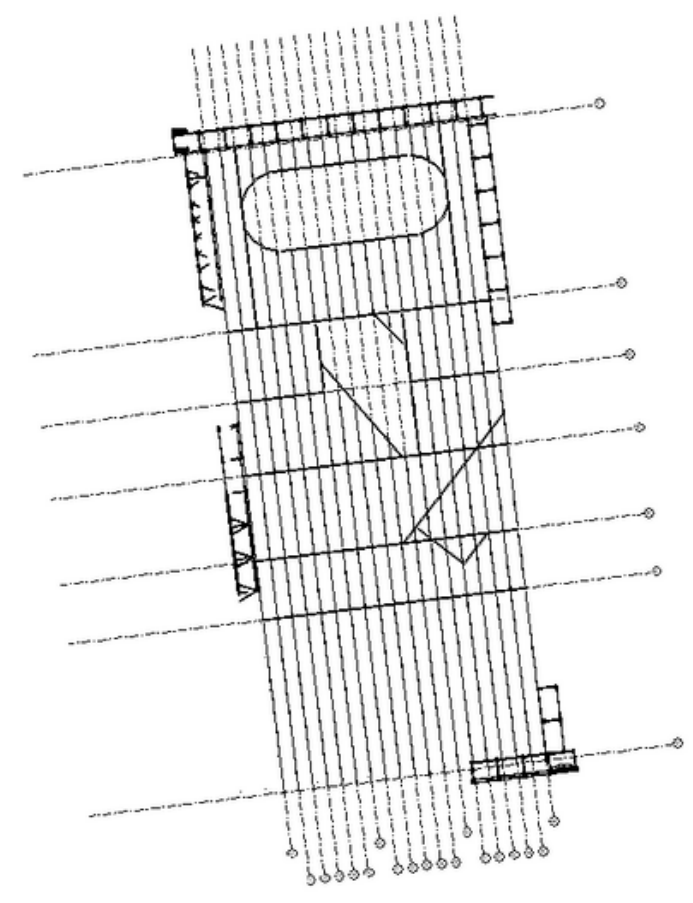
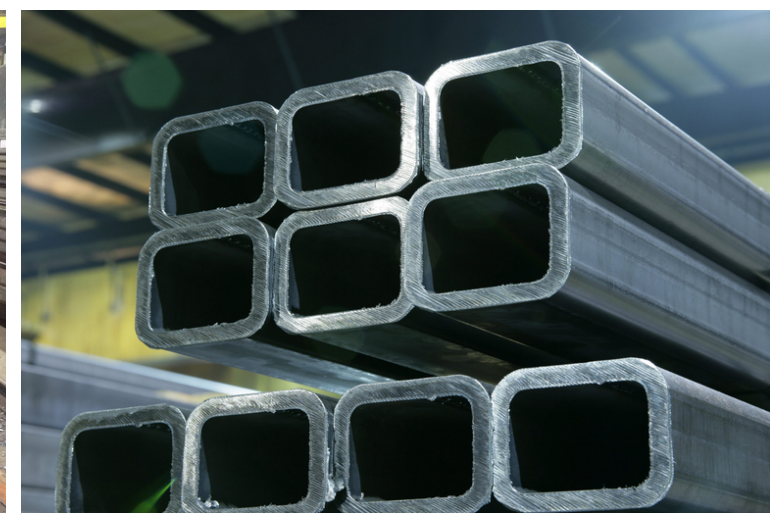
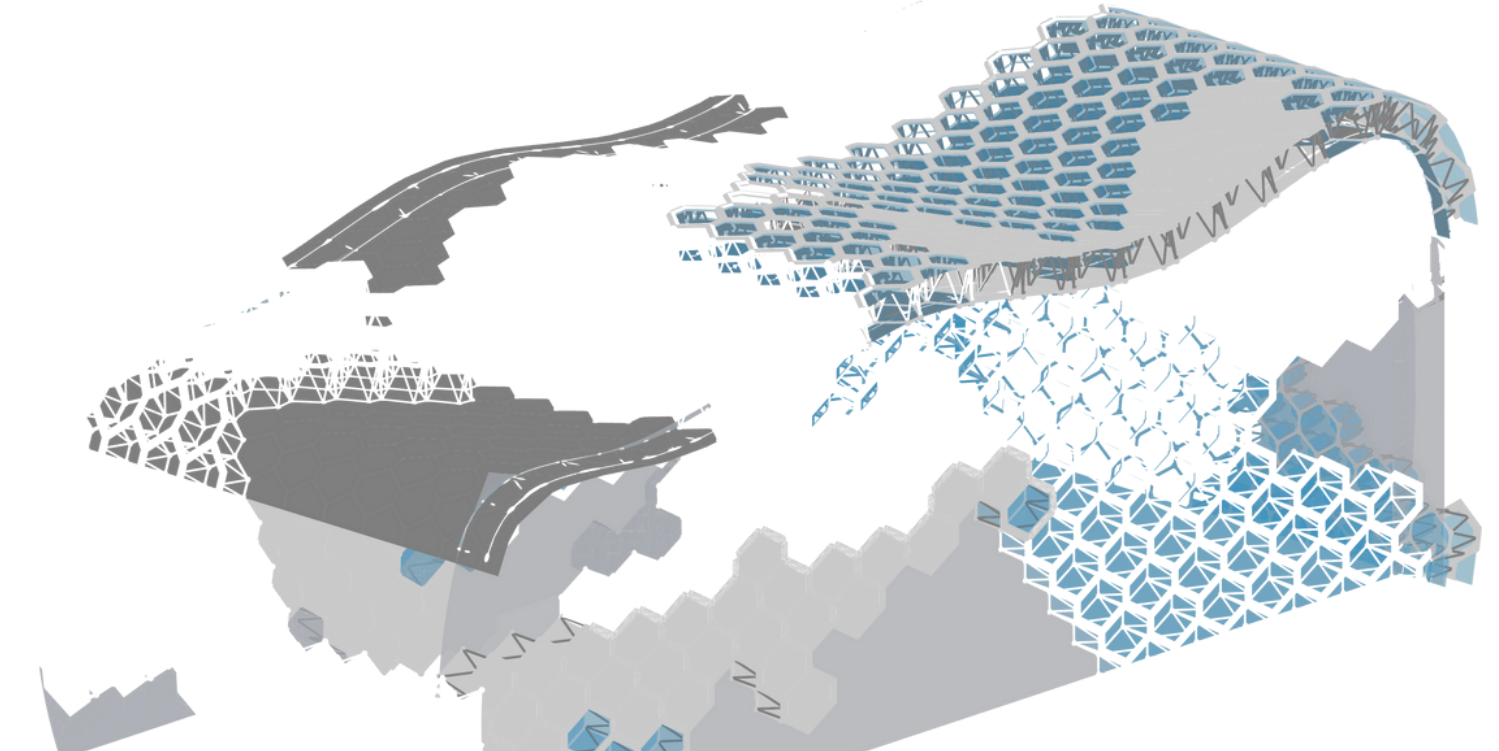


# STRUCTURAL DESIGN

## EXOSKELETON, TRUSS/WEB-BASED STRUCTURAL DESIGN

## STEEL SECTION

OPTIMAL STEEL PROFILE: HHS



THE TERM HOLLOW STRUCTURAL SECTIONS (HSS) REFERS TO HIGH-STRENGTH WELDED STEEL TUBING USED AS STRUCTURAL ELEMENTS IN BUILDINGS AND OTHER STRUCTURES AND A VARIETY OF MANUFACTURED PRODUCTS. IT IS PRODUCED IN ROUND, SQUARE AND RECTANGULAR SHAPES AND A BROAD RANGE OF SIZES TO THE ASTM A500, A1085, AND A1065 SPECIFICATIONS.

### HHS

A1065 comes in two grades, 50 and 50W, both with a minimum 50 ksi yield strength. Grade 50W is manufactured with enhanced atmospheric corrosion resistance. Due to the stringent wall thickness tolerance inherent to A1065, these sections and their connections may be designed using their full nominal thickness.

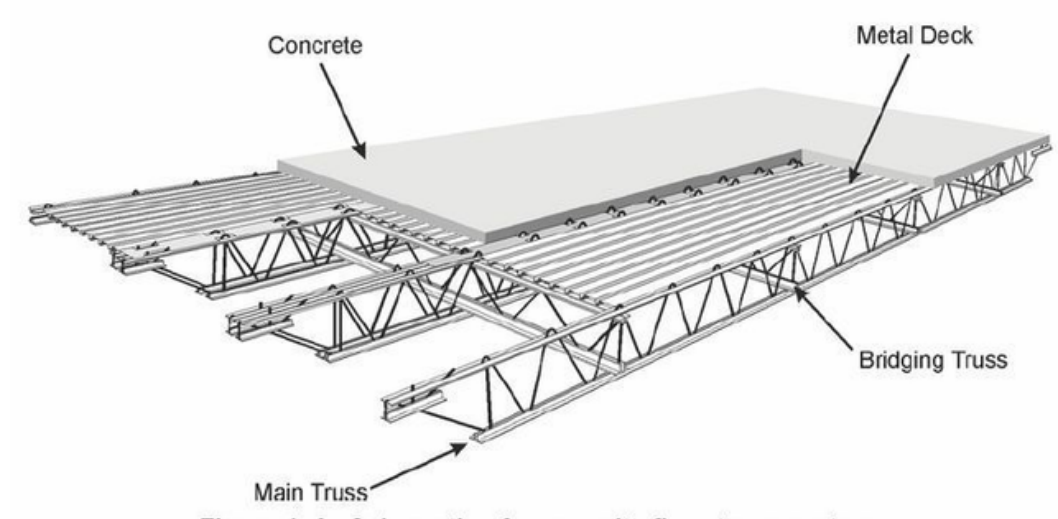
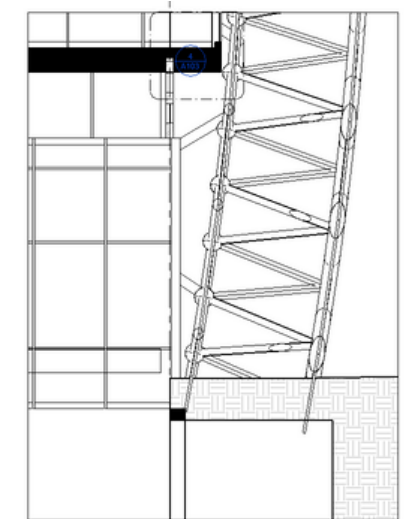
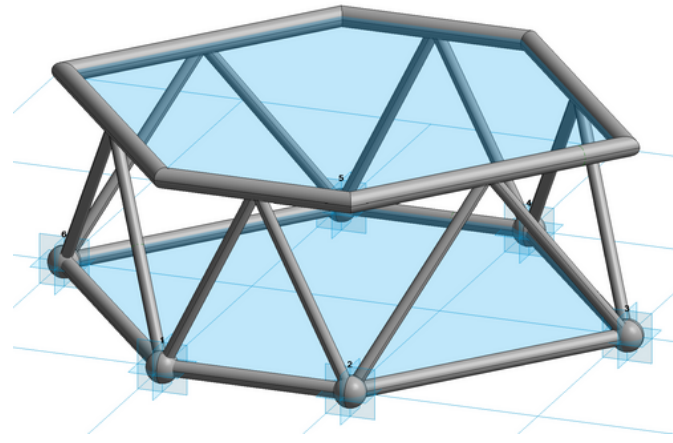
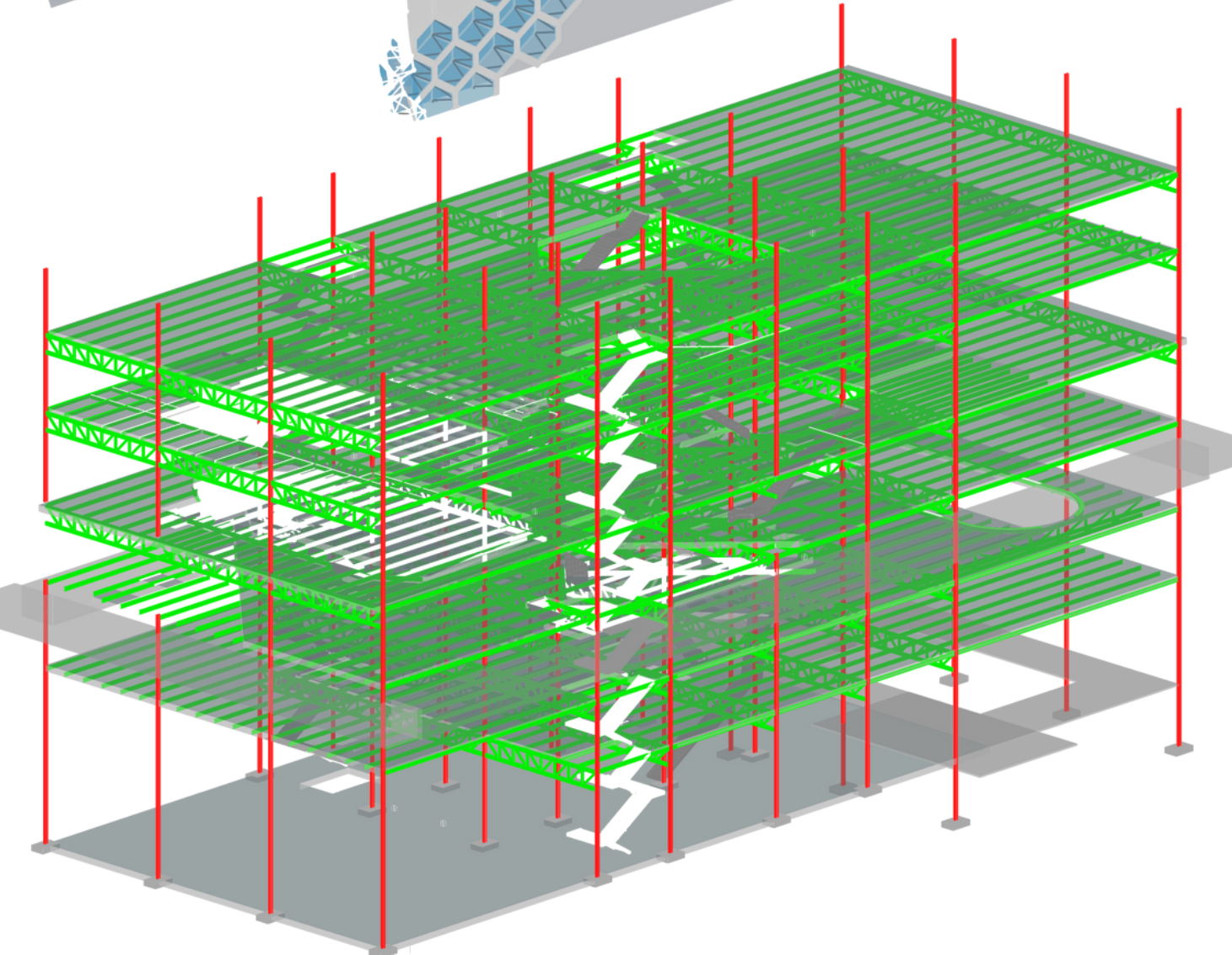
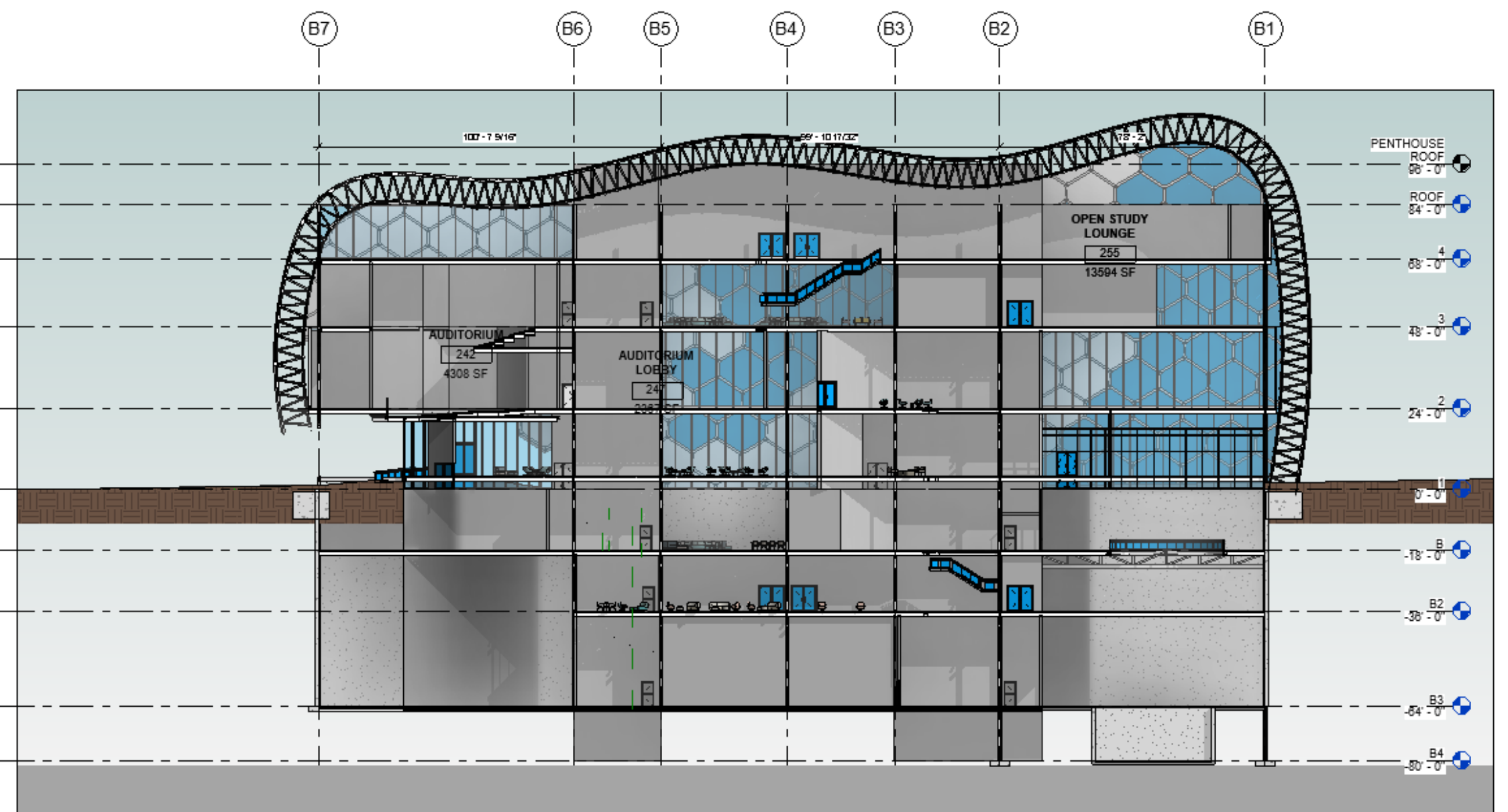
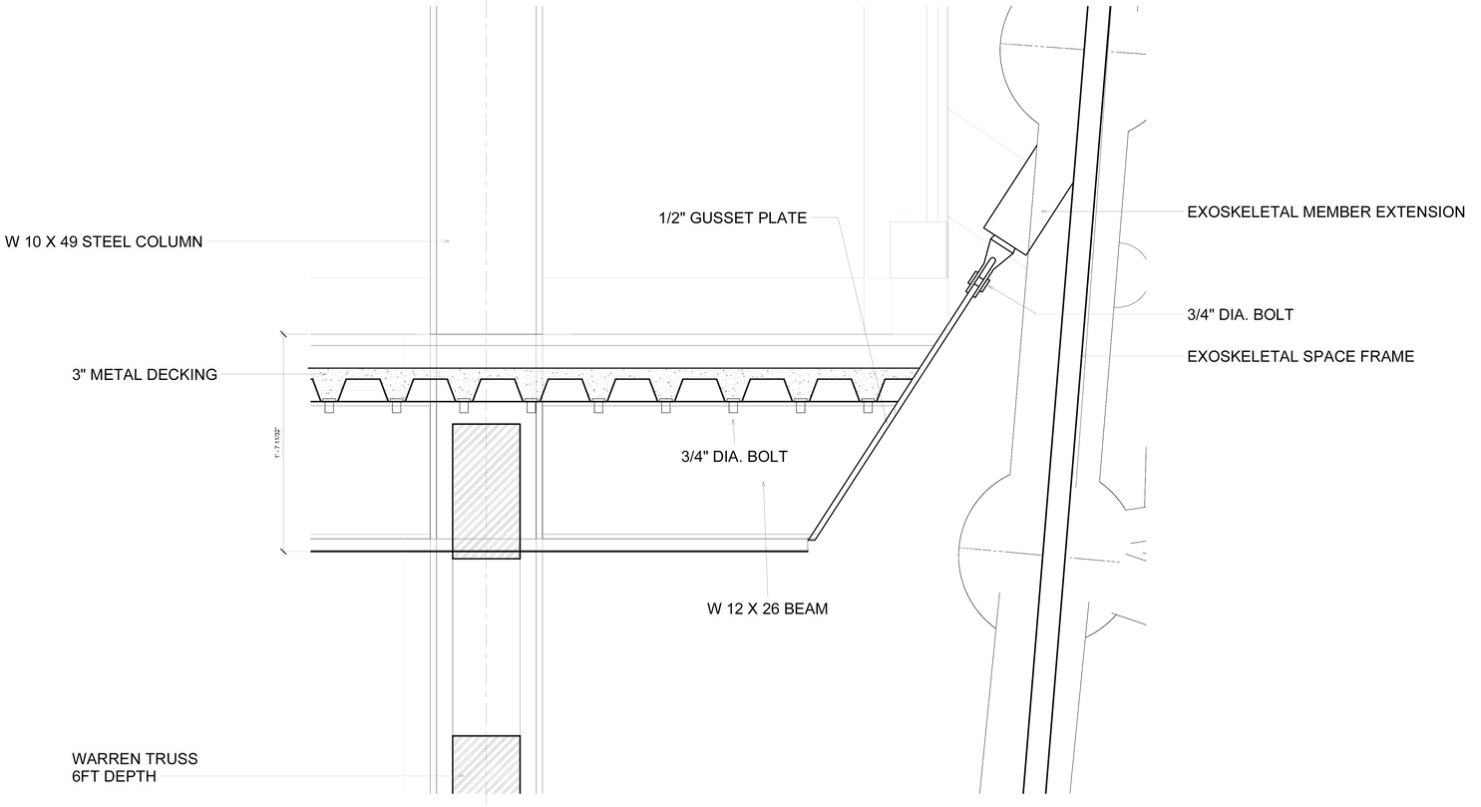


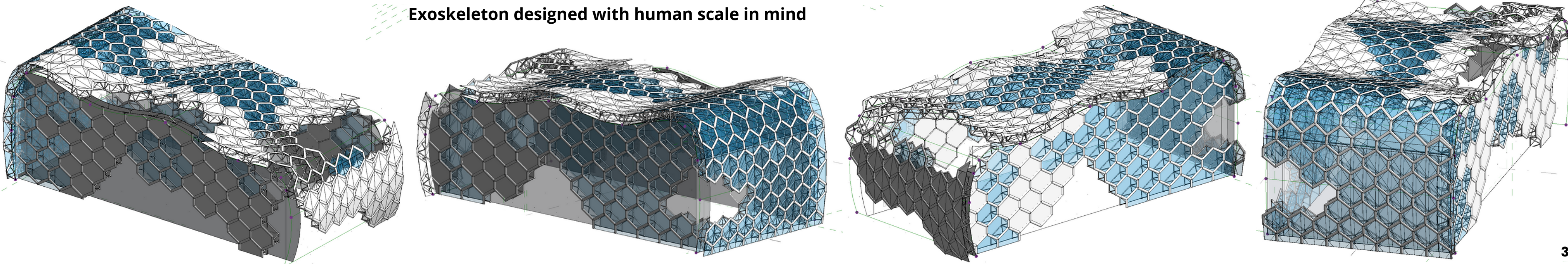
Figure 1-6. Schematic of composite floor truss system.



## EAST SECTION

## BUILDING SKIN

Exoskeleton designed with human scale in mind





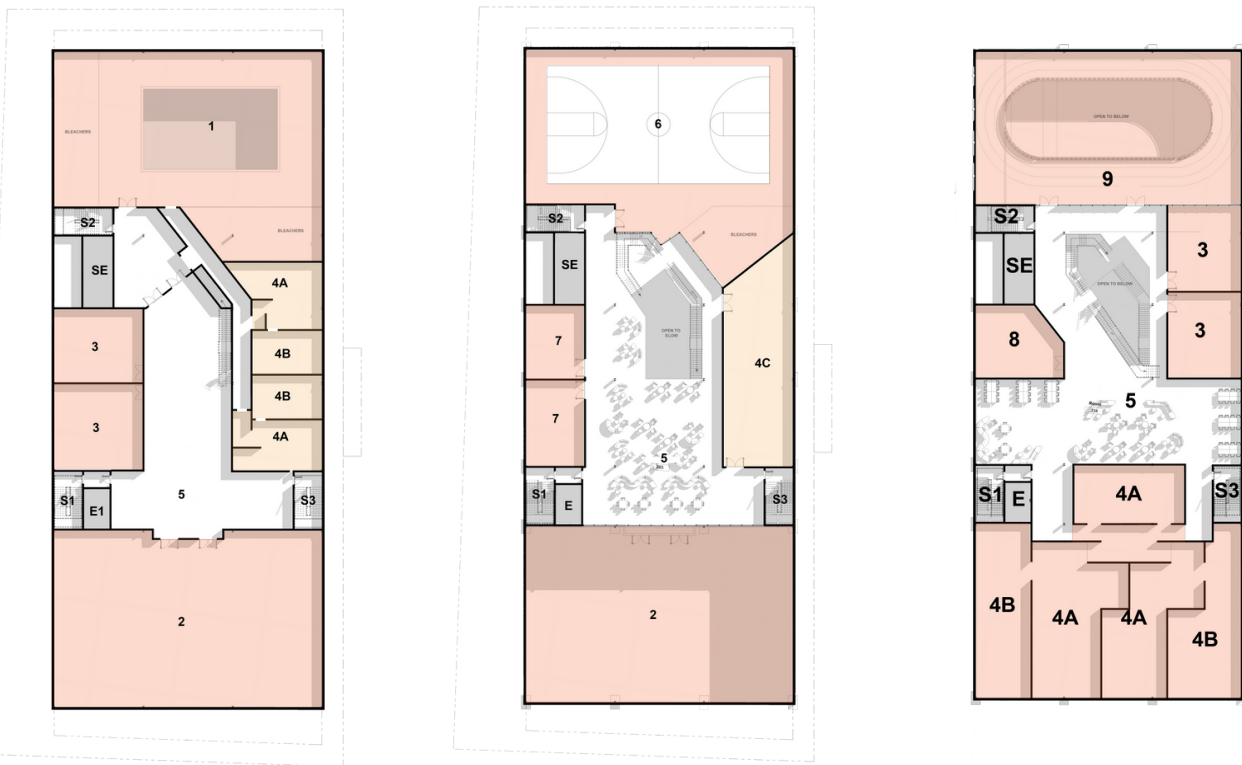
# DRAWINGS

## Program Key 1

- Sports and Physical Activity
- Wellness and Reset
- Green Terrace
- Administrative
- Study
- Arts

## Program Key 2

- |                  |                     |                       |                   |
|------------------|---------------------|-----------------------|-------------------|
| 1 Swimming Pool  | 6 Basketball Court  | 13 Volleyball Court 1 | 20 Stage Office   |
| 2 Soccer Pitch   | 7 Yoga Studio       | 14 Volleyball Court 2 | 21 Fitness Center |
| 3 Squash Court   | 8 Dance Studio      | 15 Theater & Balcony  | 22 Roof Terrace   |
| 4A Changing Room | 9 Running Track     | 16 Admin Offices      | 23 Classroom      |
| 4B Shower Room   | 10 Main Lobby       | 17 Admin Lobby        | 24 Lecture Room   |
| 4C Restroom      | 11 Gallery          | 18 Terrace            | 25 Study Room     |
| 5 Lounge Space   | 12 Cafe             | 19 Back of House      | 26 Open Study     |
|                  | E Elevator          |                       | 27 Help Desk      |
|                  | SE Service Elevator | S1 Stair 1            | S2 Stair 2        |
|                  |                     |                       | S3 Stair 3        |



LEVEL B3

LEVEL B2

LEVEL B1



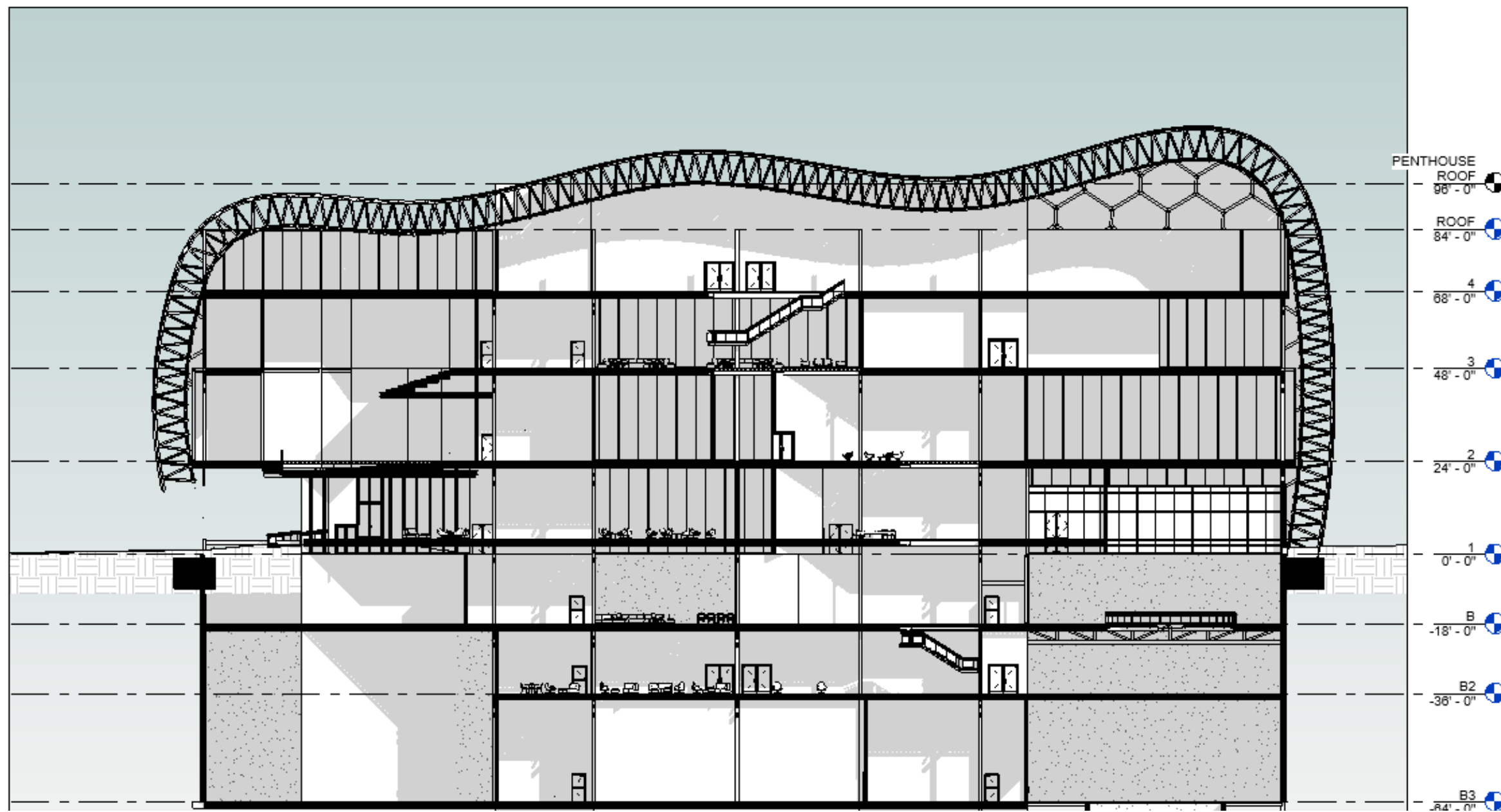
LEVEL 1



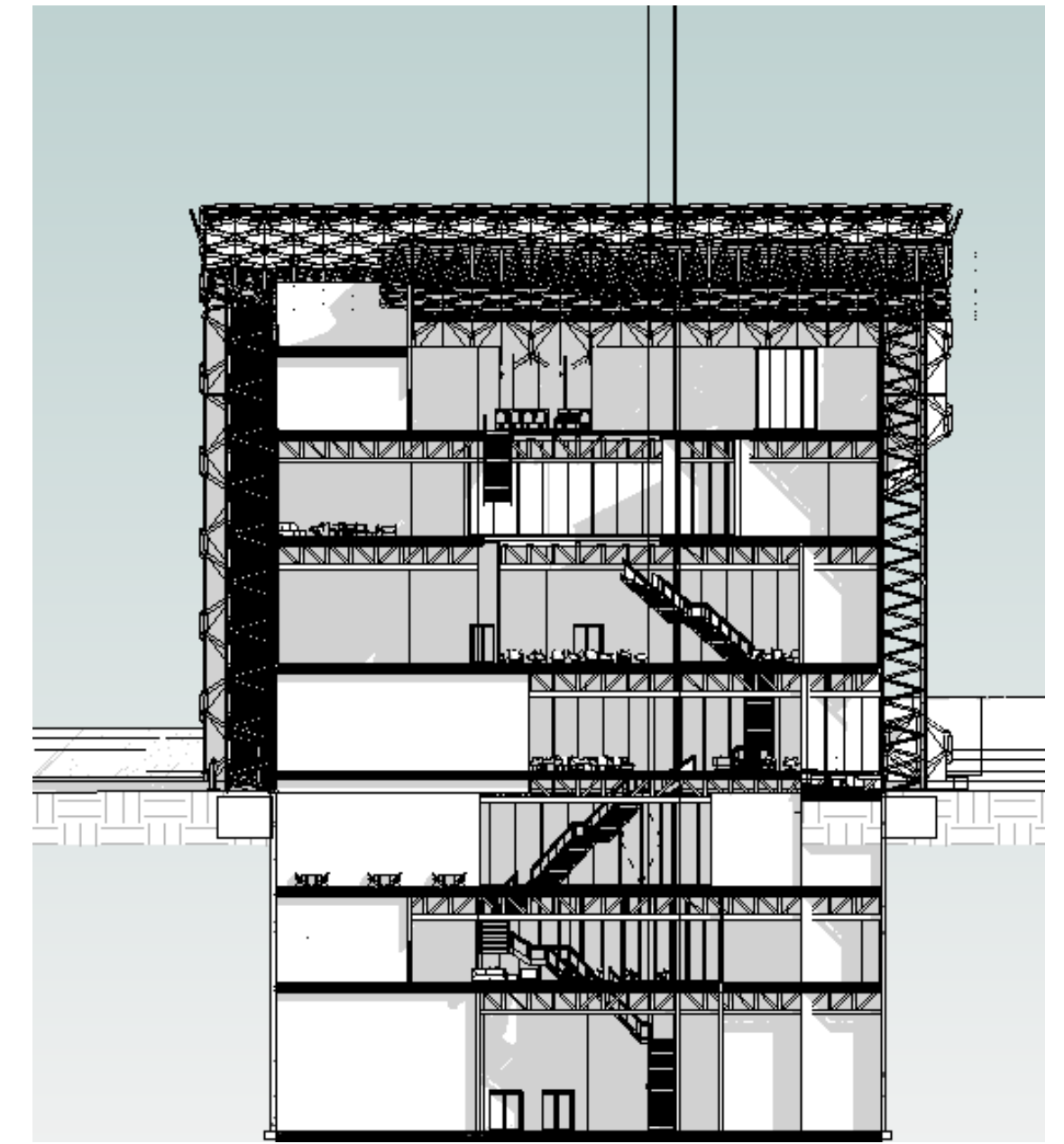
LEVEL 2

LEVEL 3

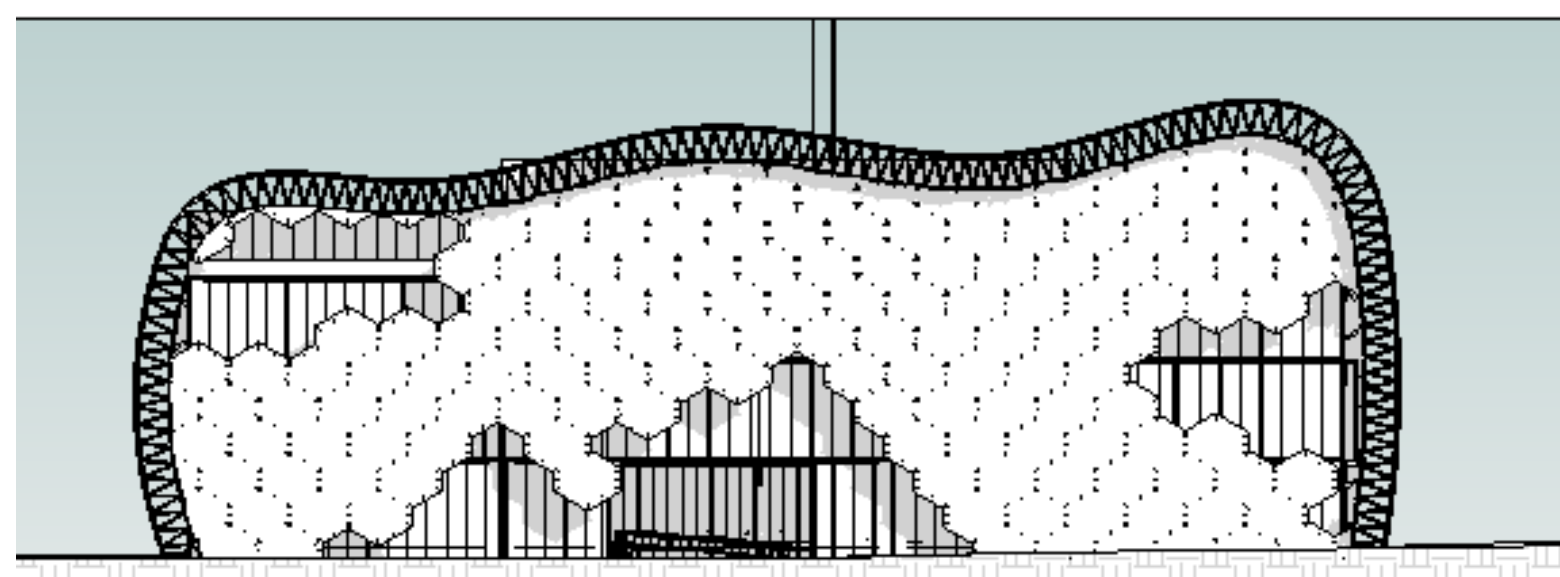
LEVEL 4



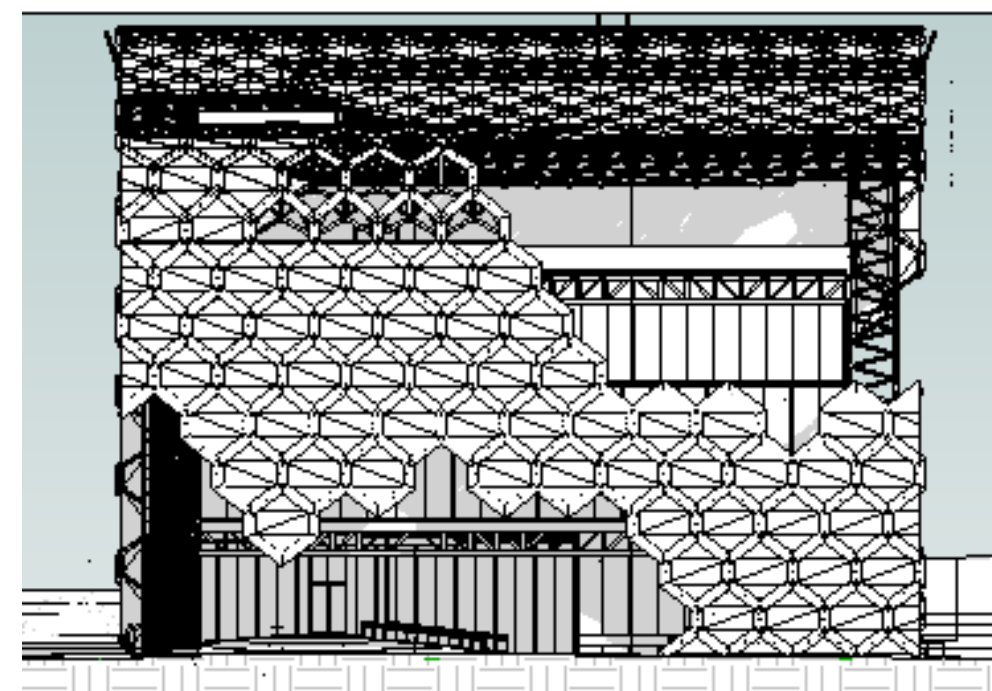
LONGITUDINAL SECTION



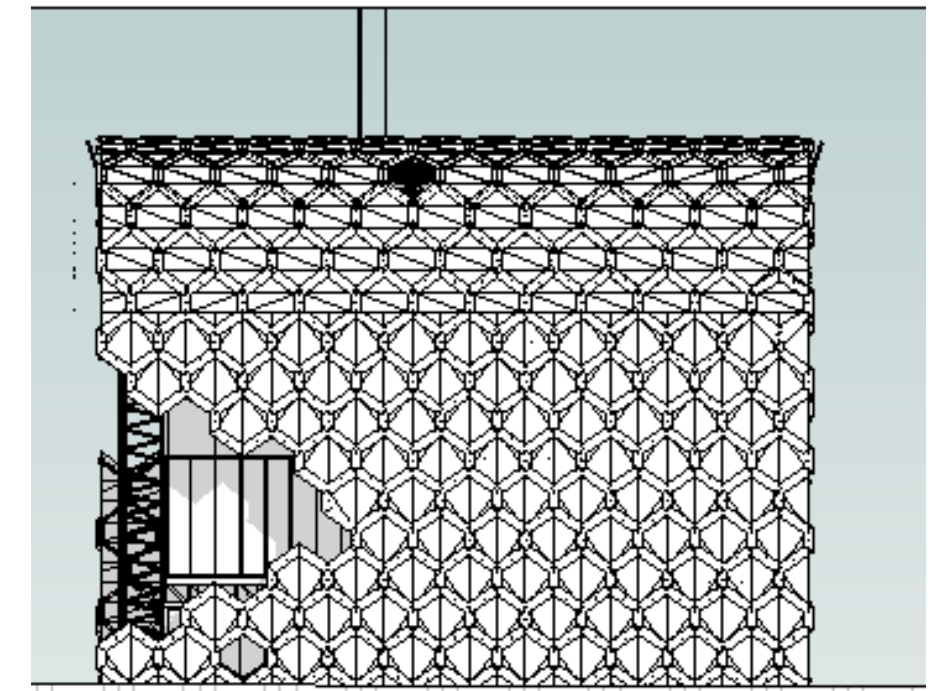
CROSS SECTION



EAST ELEVATION



SOUTH ELEVATION



NORTH ELEVATION



# VIEWS

