



More Gardens
Outdoor Camping Facilities Design Book

Introduction

More Gardens Comfort Station

This seasonal outdoor wash station has been designed with sustainable options, and the comfort of the park-goers in mind.

The architecture interns have designed this system to serve the patrons of the park: creating a safe and environmentally friendly unconditioned space.

History of More Gardens (Timeline)



The Dutch settled on the Lenape land that would become New York, claiming what would eventually become Hurleyville

1660



The Lenape inhabited New Jersey, Delaware, southern New York and eastern Pennsylvania when the Europeans came. ... Our Nanticoke ancestors were among the first of the Northeastern Indian Nations to resist European colonial intrusion into our homeland as early as the 1650's.

The house on Muthig Road is built in Hurleyville NY, on what was once the Lenape land.



1950

Six acres of woods, and fields, possible pond site, can be penned for animals, and very quiet rd. The house hasn't been updated since the 50's/60's, it's in great condition with tremendous potential. Attic floor with access from outside that could be made into two bedrooms with an interior stairway.



This barn is the site location for one of the structures the architecture group has worked to create.

The house was built by the owner who was a Machinist, wood worker, gun maker, who really knew what he was doing. All woodwork inside house is hand done, windows, doors, Kitchen Cabinets. The house is located close to the Neversink Reservoir

1960



The Neversink Reservoir was named such for the legend of horse being able to walk through it without sinking.

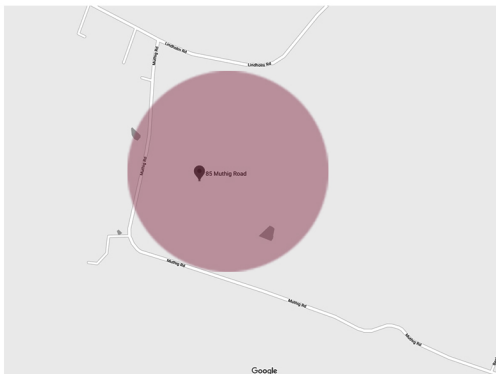
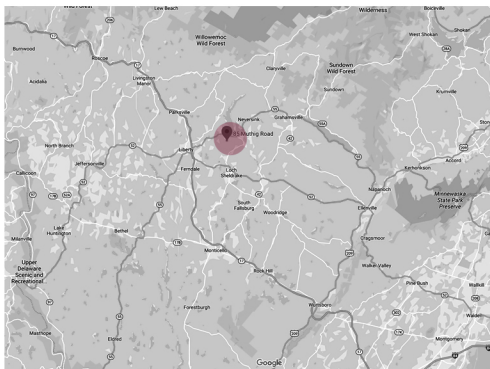


2018

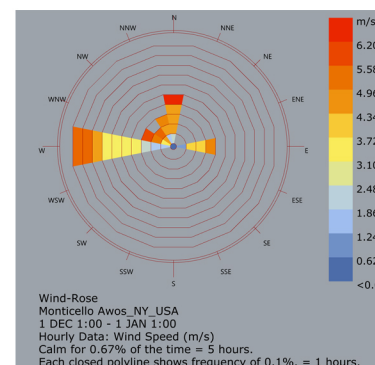
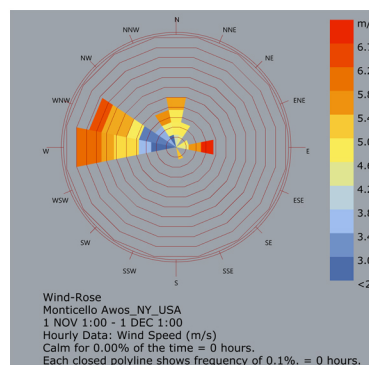
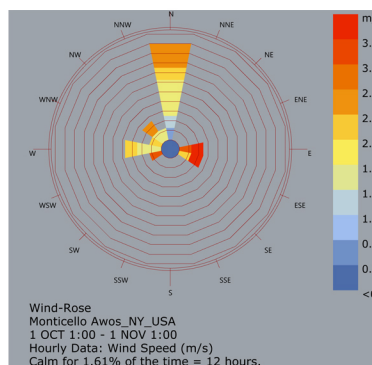
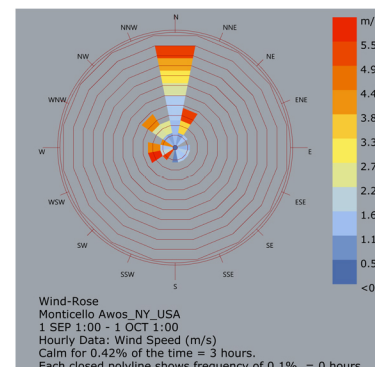
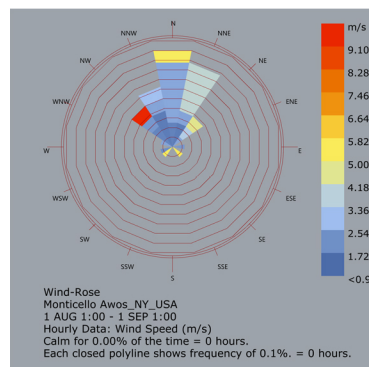
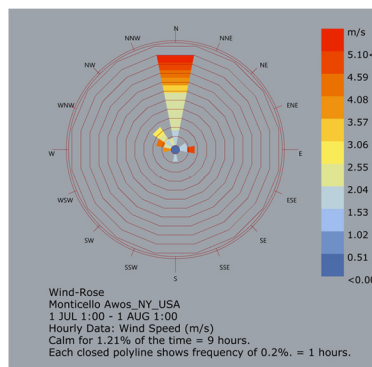
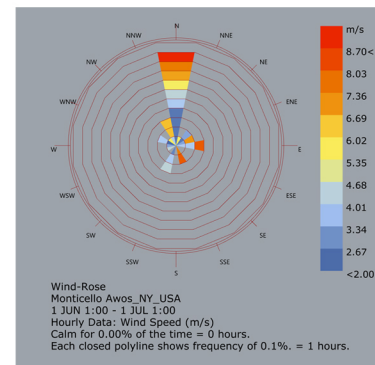
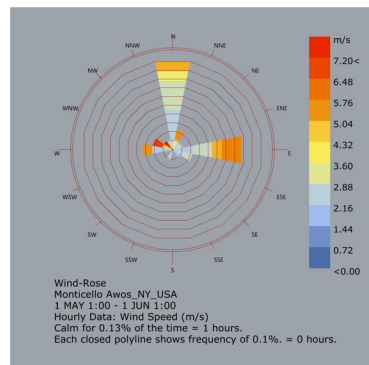
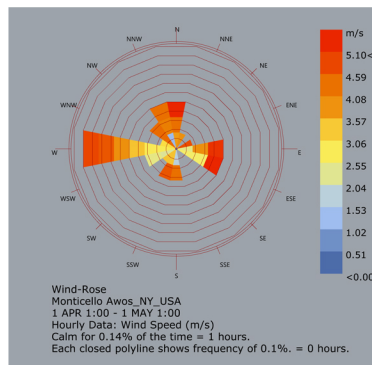
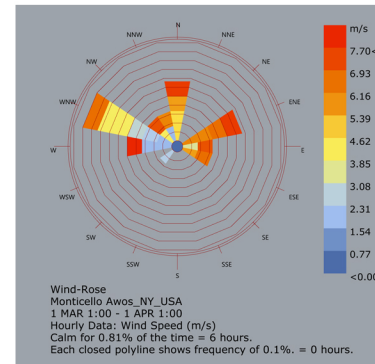
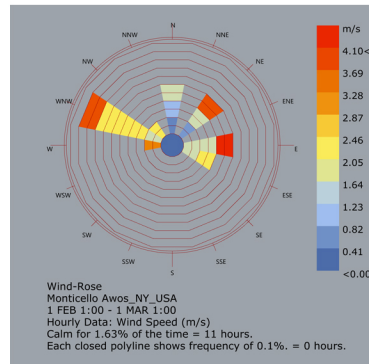
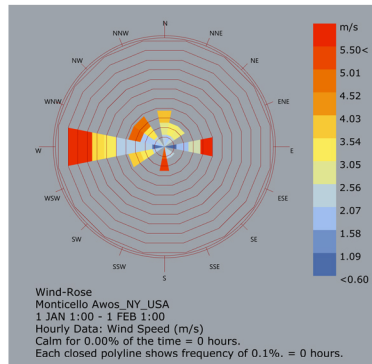
Aresh Javadi and Kate Temple-West move into the property and begin developing a community garden center, that serves the environment and underprivileged communities in NYC.

The More Gardens Fund works to promote community activism, and environmental consciousness, while accurately telling the story, and respecting the history of the land.

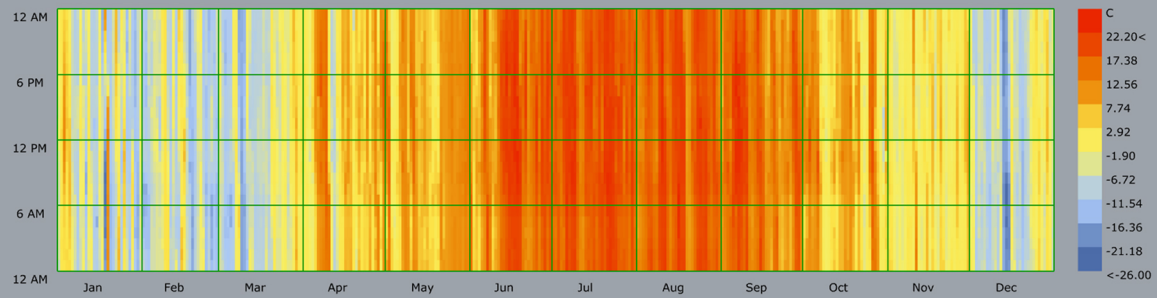
Site Location



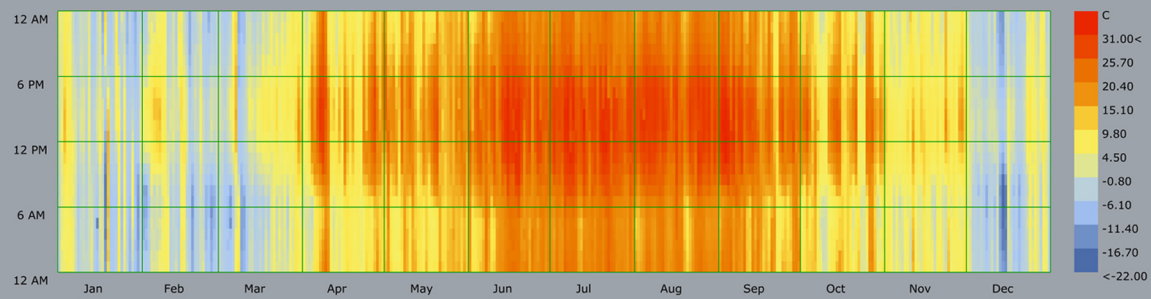
Weather Analysis



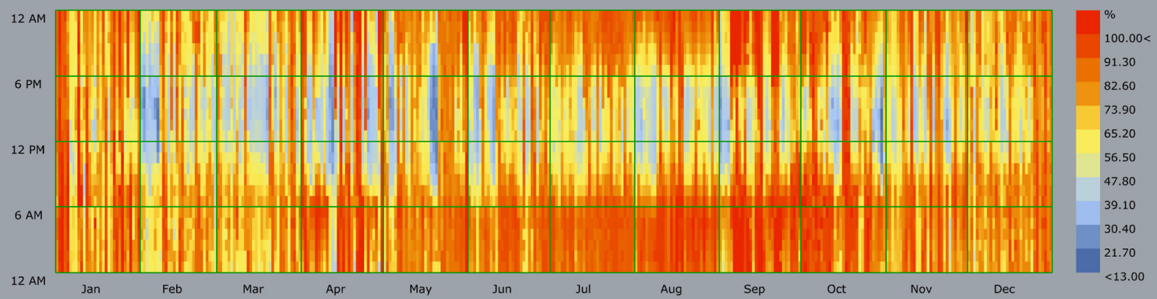
Weather Analysis



Dew Point Temperature (C) - Hourly
Monticello Awos_NY_USA
1 JAN 1:00 - 31 DEC 24:00

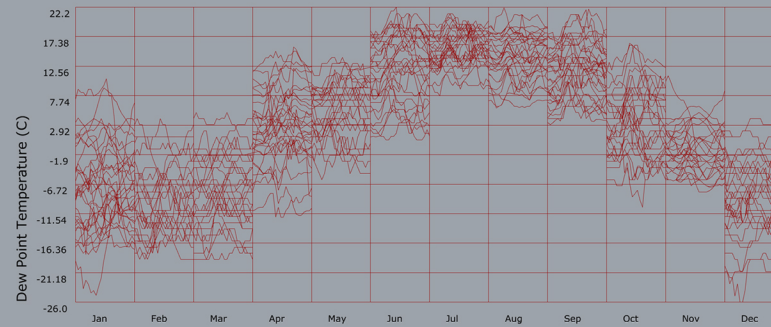


Dry Bulb Temperature (C) - Hourly
Monticello Awos_NY_USA
1 JAN 1:00 - 31 DEC 24:00



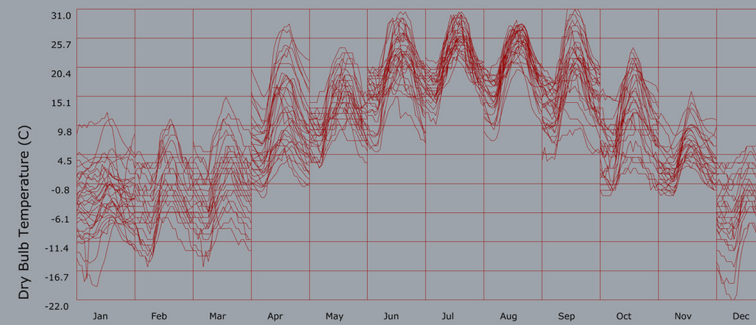
Relative Humidity (%) - Hourly
Monticello Awos_NY_USA
1 JAN 1:00 - 31 DEC 24:00

Weather Analysis



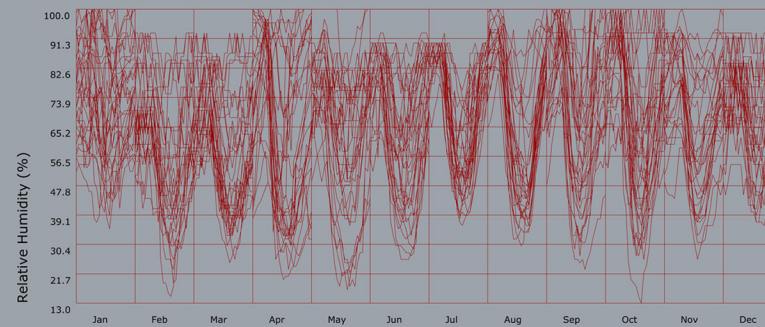
Dew Point Temperature (Hourly)

Monticello Awos_NY_USA



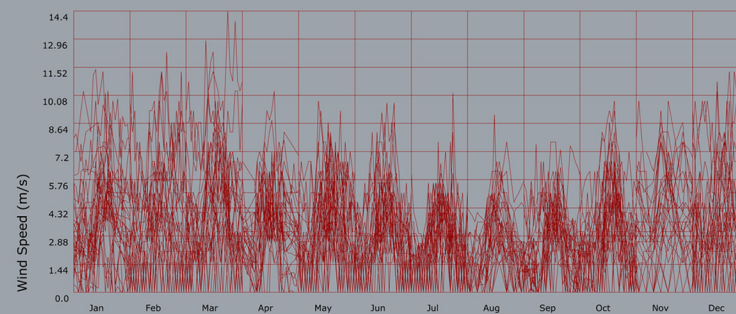
Dry Bulb Temperature (Hourly)

Monticello Awos_NY_USA



Relative Humidity (Hourly)

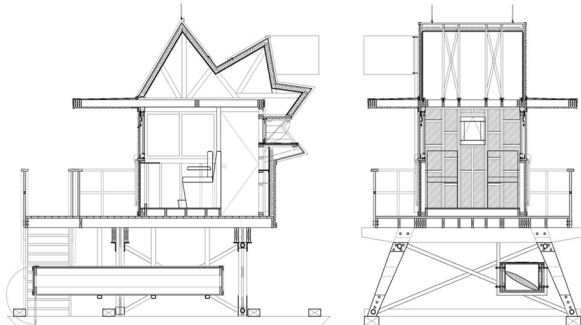
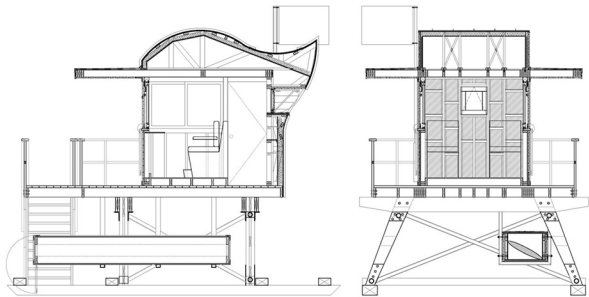
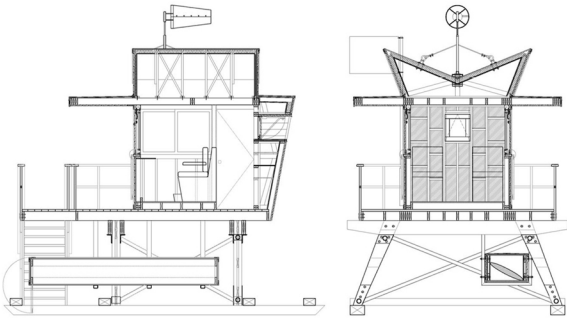
Monticello Awos_NY_USA



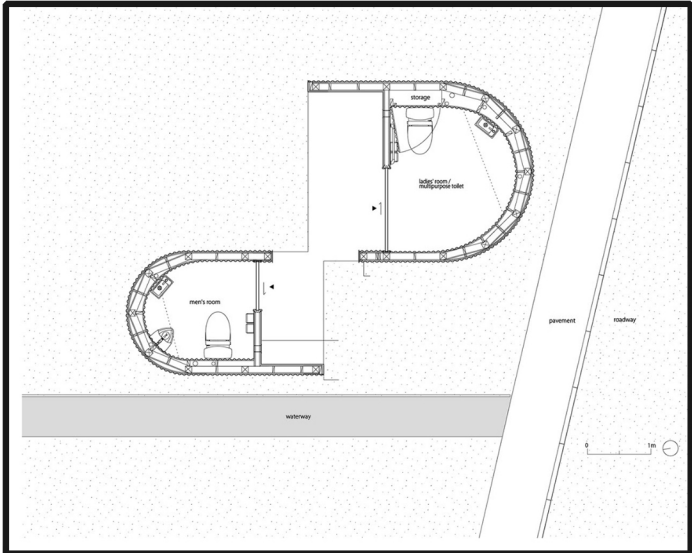
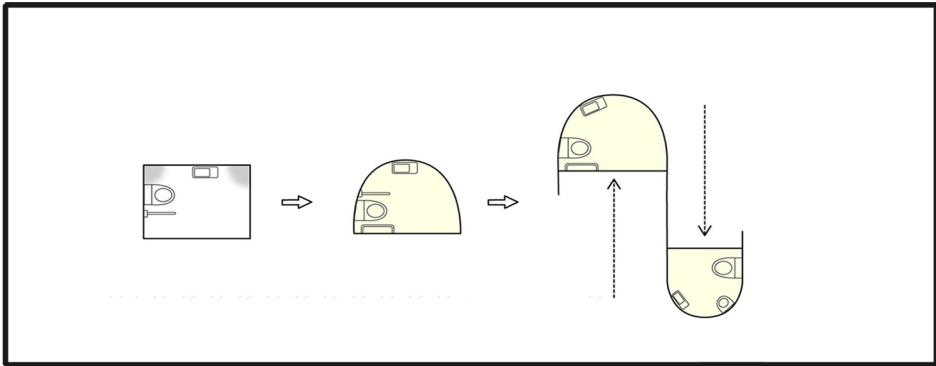
Wind Speed (Hourly)

Monticello Awos_NY_USA

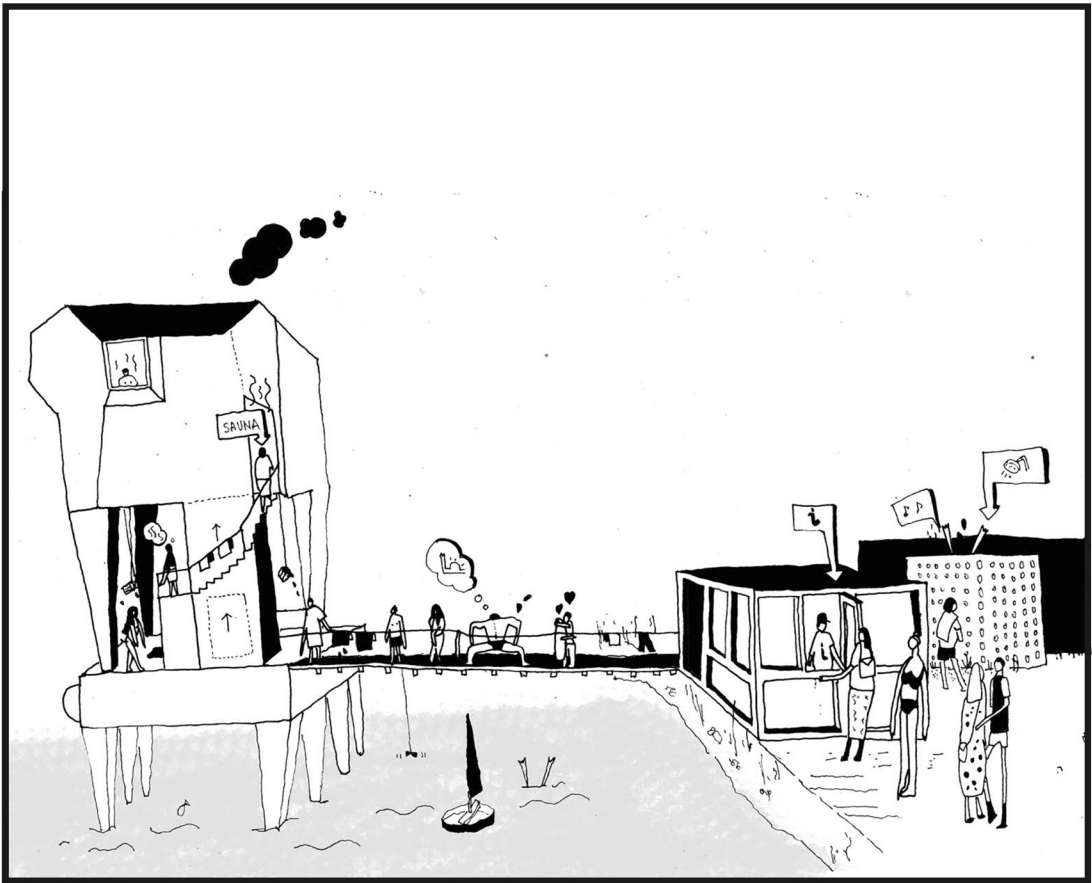
Precedents



Precedents



Precedents

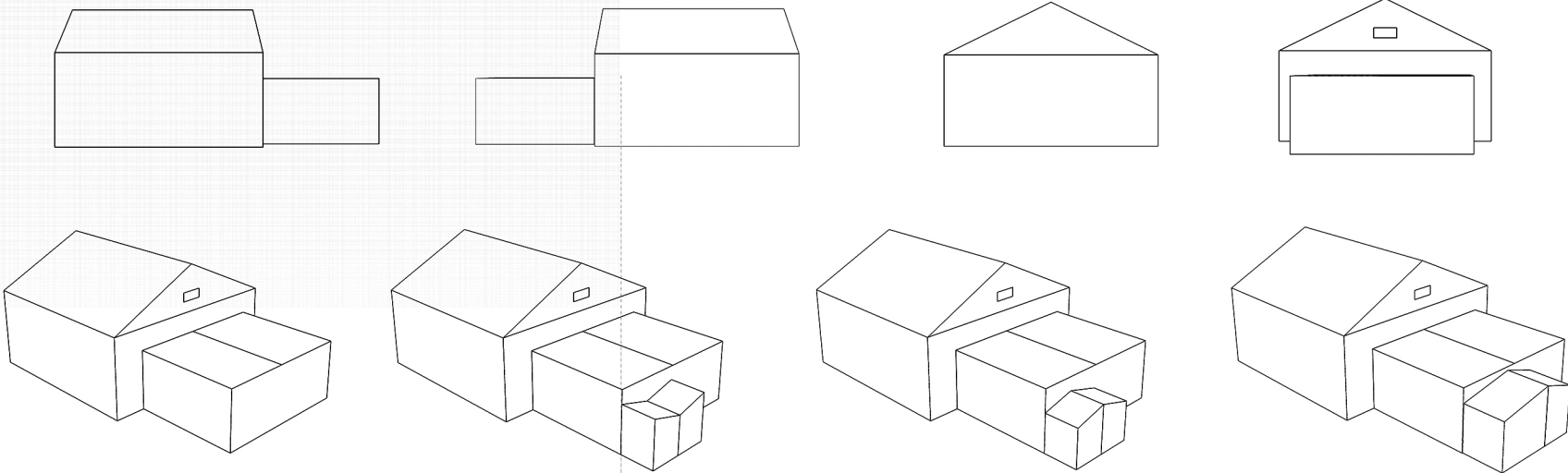


Precedents

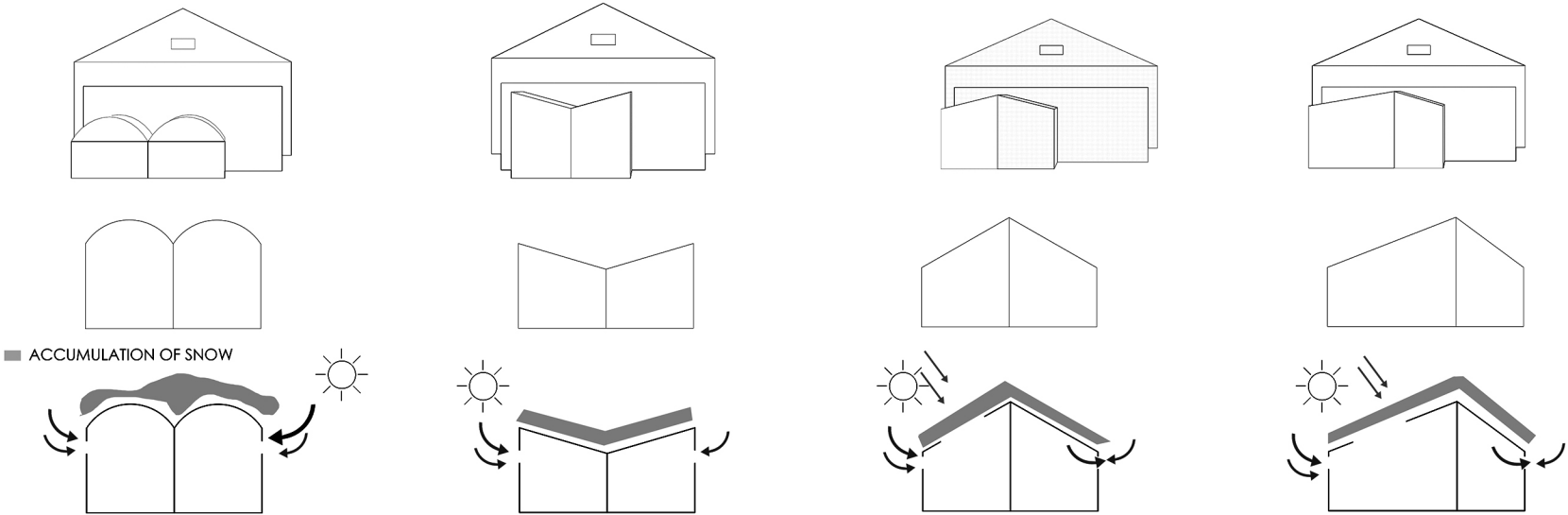


Geometric Analysis

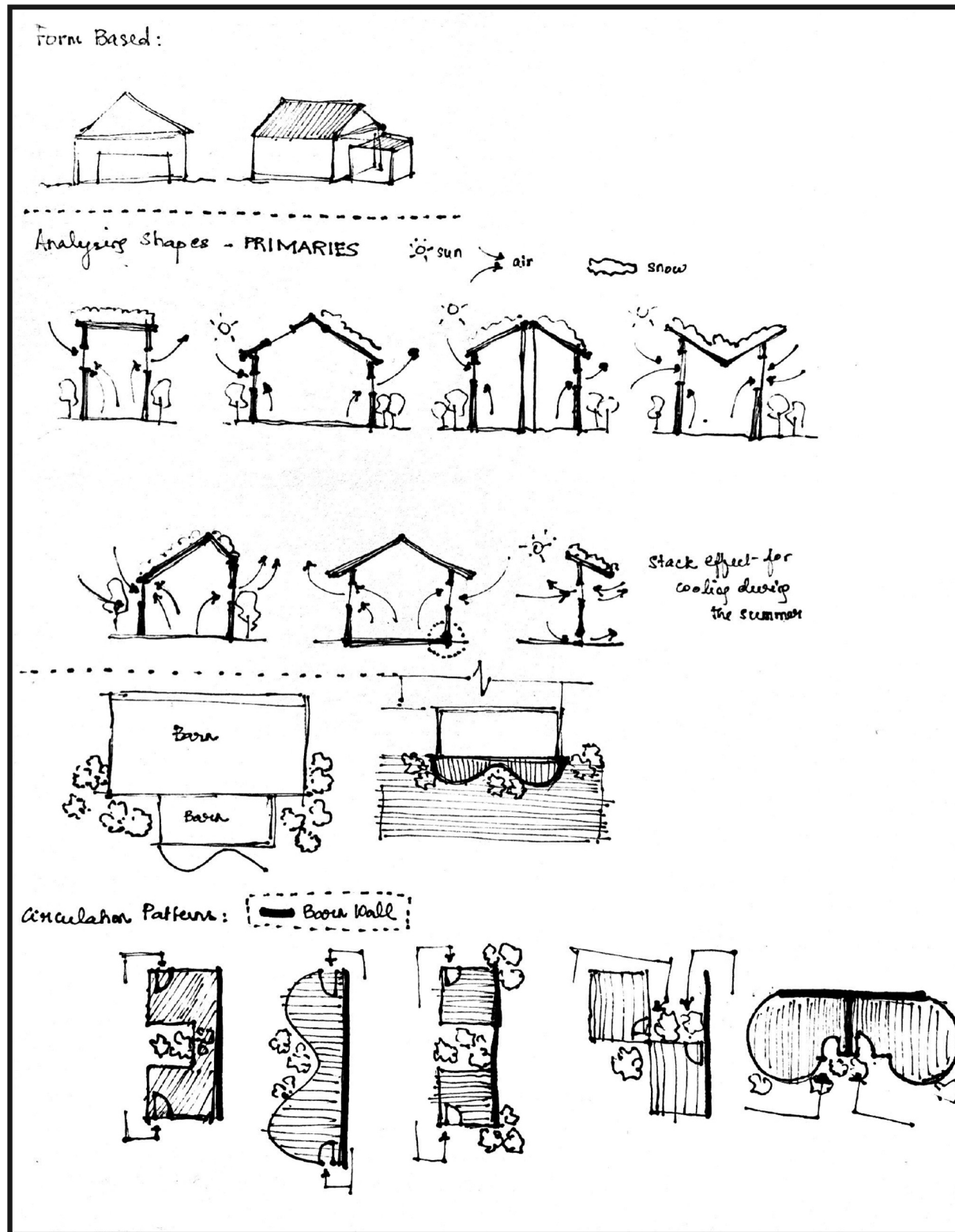
EXISTING STRUCTURE



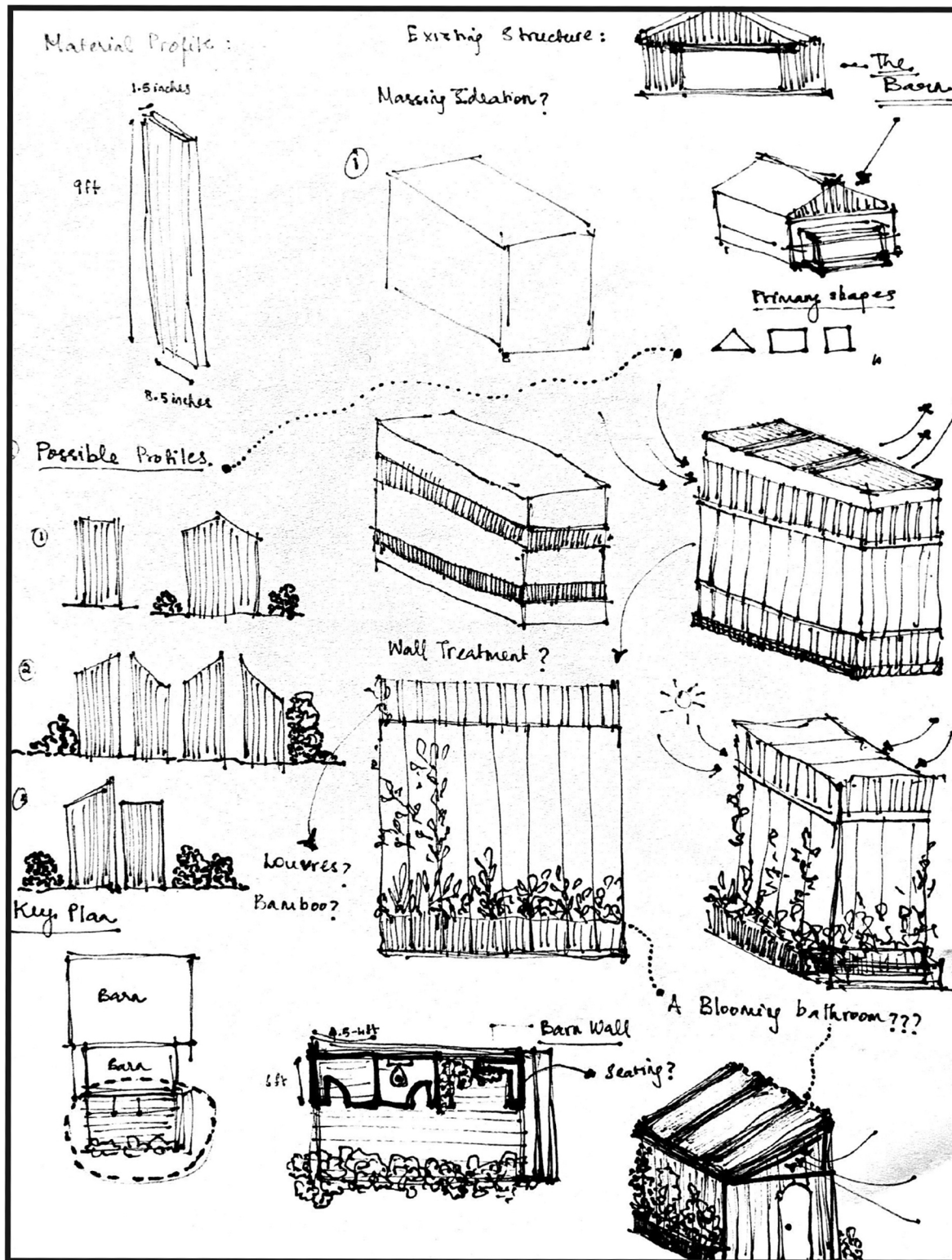
ANALYZING ROOF PROFILES



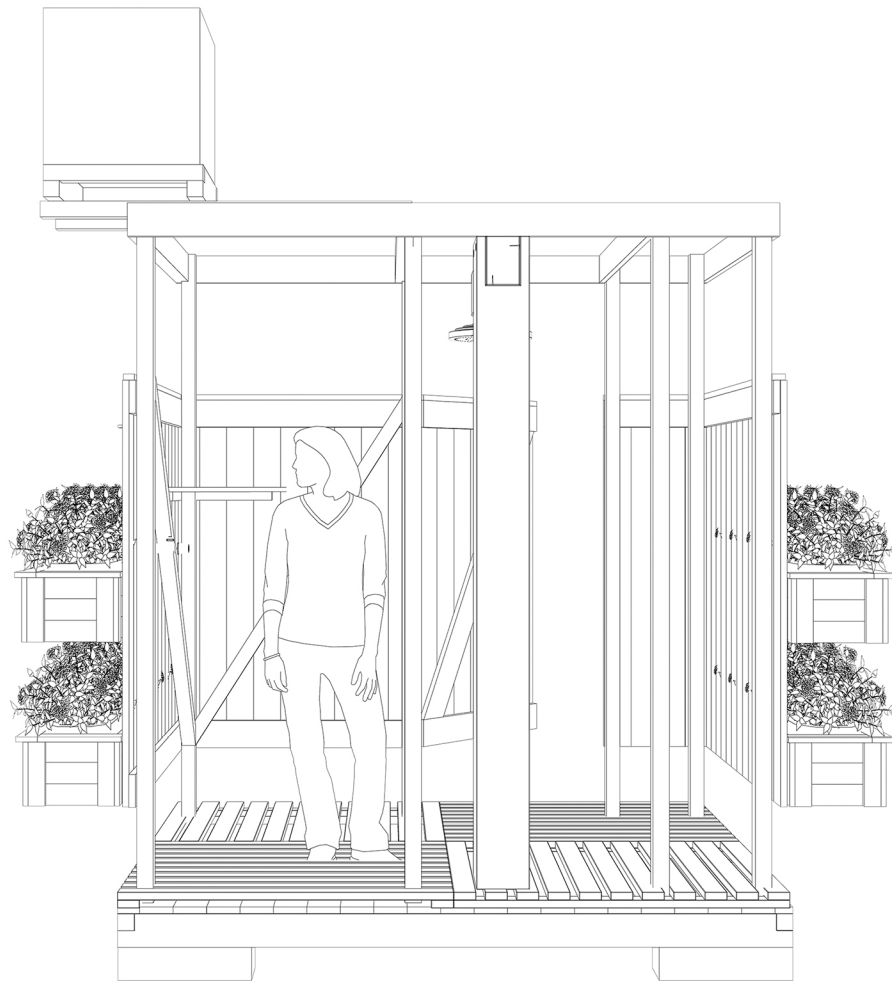
Sketches



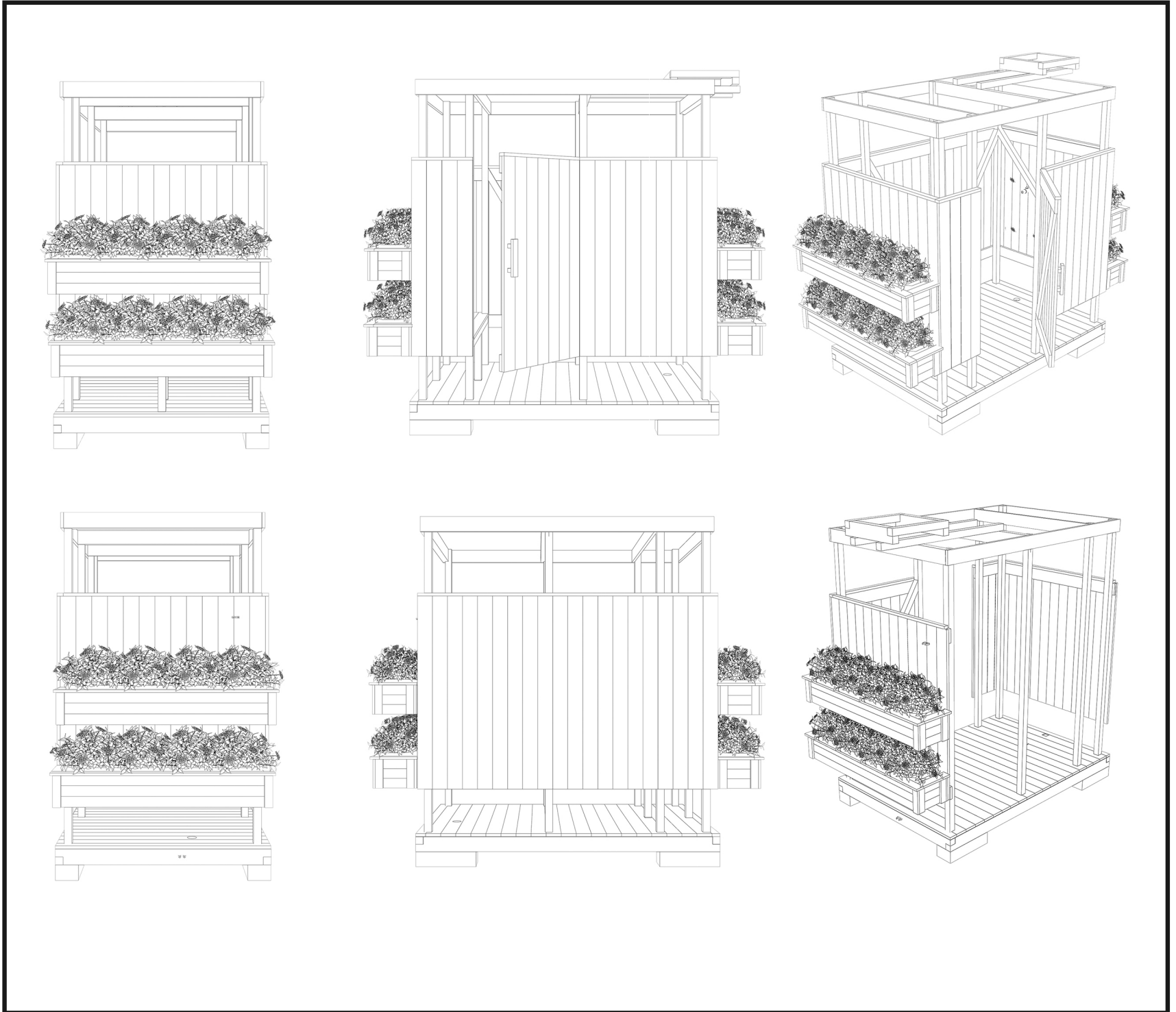
Sketches



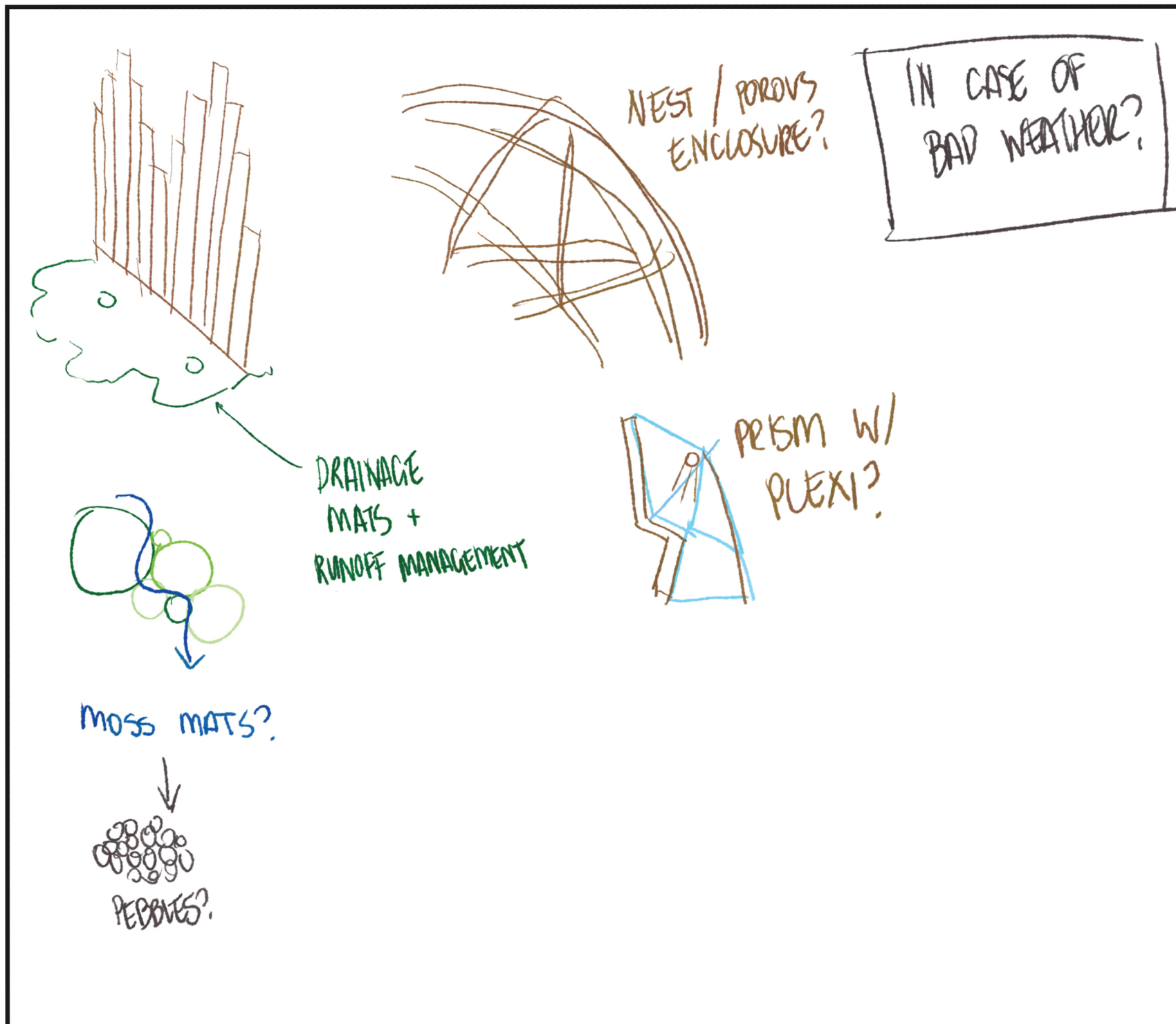
Sketches



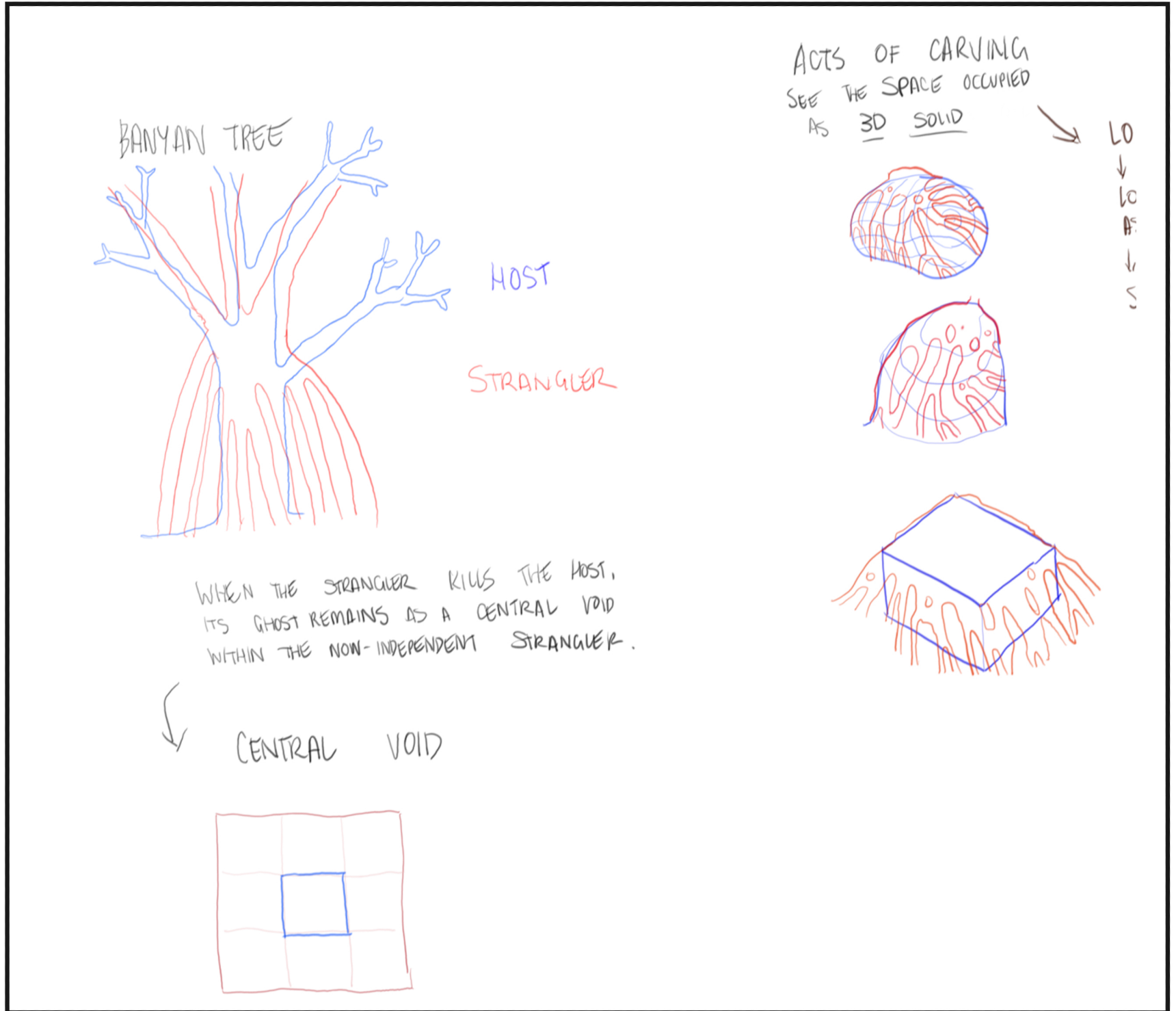
Sketches



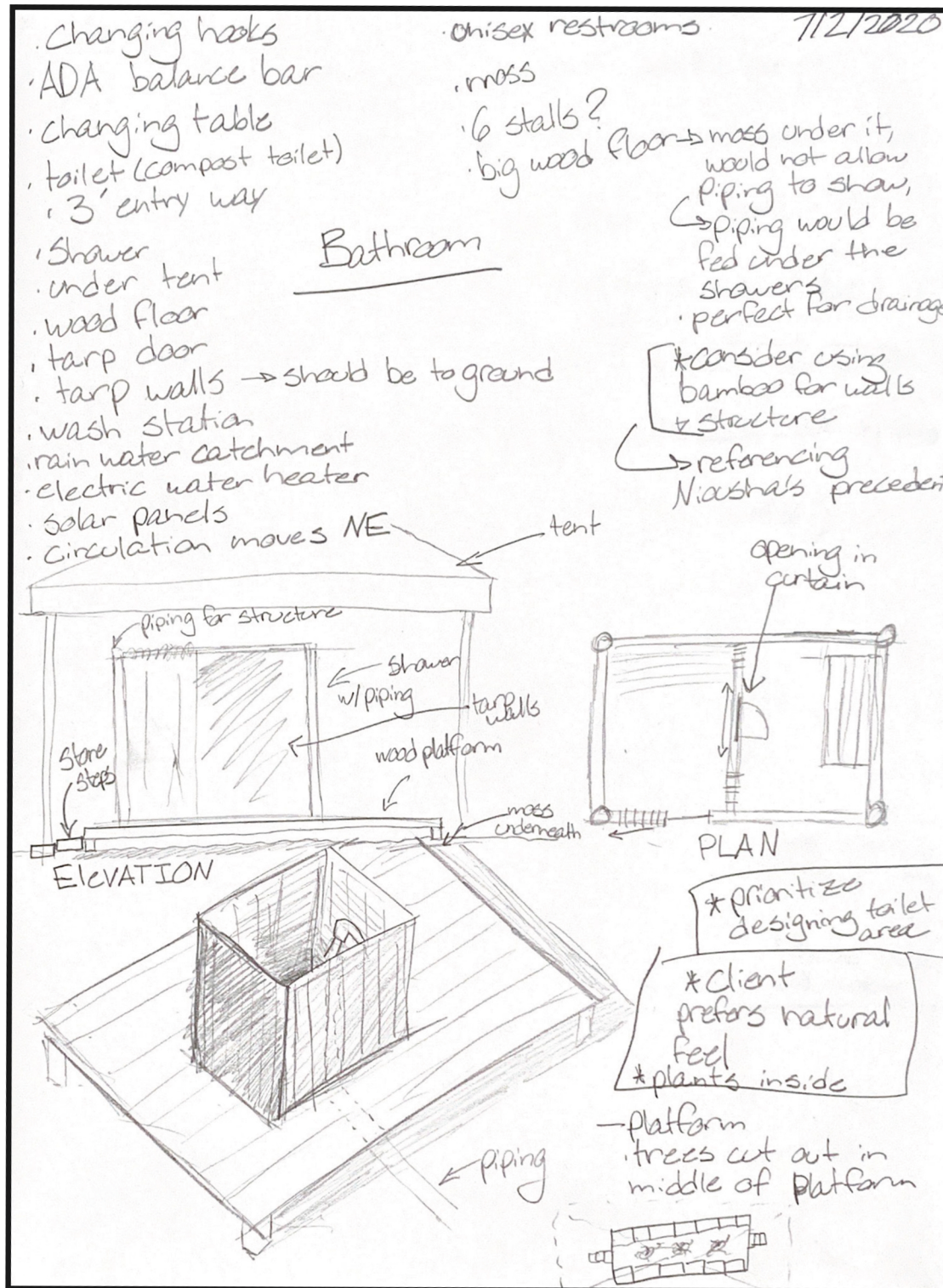
Sketches



Sketches



Future Plans



Future Plans

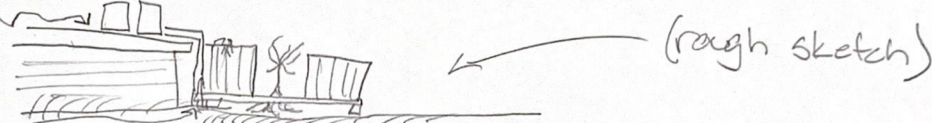
- Design Thoughts + Logistics

- need platform dimensions so math can be done
- 2 showers 2 bathrooms
- a quarter to a third of the space is wash area + sink
- 24' wide 7' overhang from floor to roof is 8'

*relevant links + updates.doc → dimensions of back of barn

are we building into back of barn or next to it?
no → building outside against

- water catchment + heater would be on the roof + pipes would come down off the side



site is sloping down by 1'

- Planks

- roughly 150 planks are already in our possession
- 9' long each, 1.25-1.5" thick, 8-8.5" wide

- Bamboo

- 12' long, 1"-2.5" in diameter

find a way to use plexi?

best flooring is wood

these ideas will solve

- Platform

- anywhere from 24' wide to 20' wide

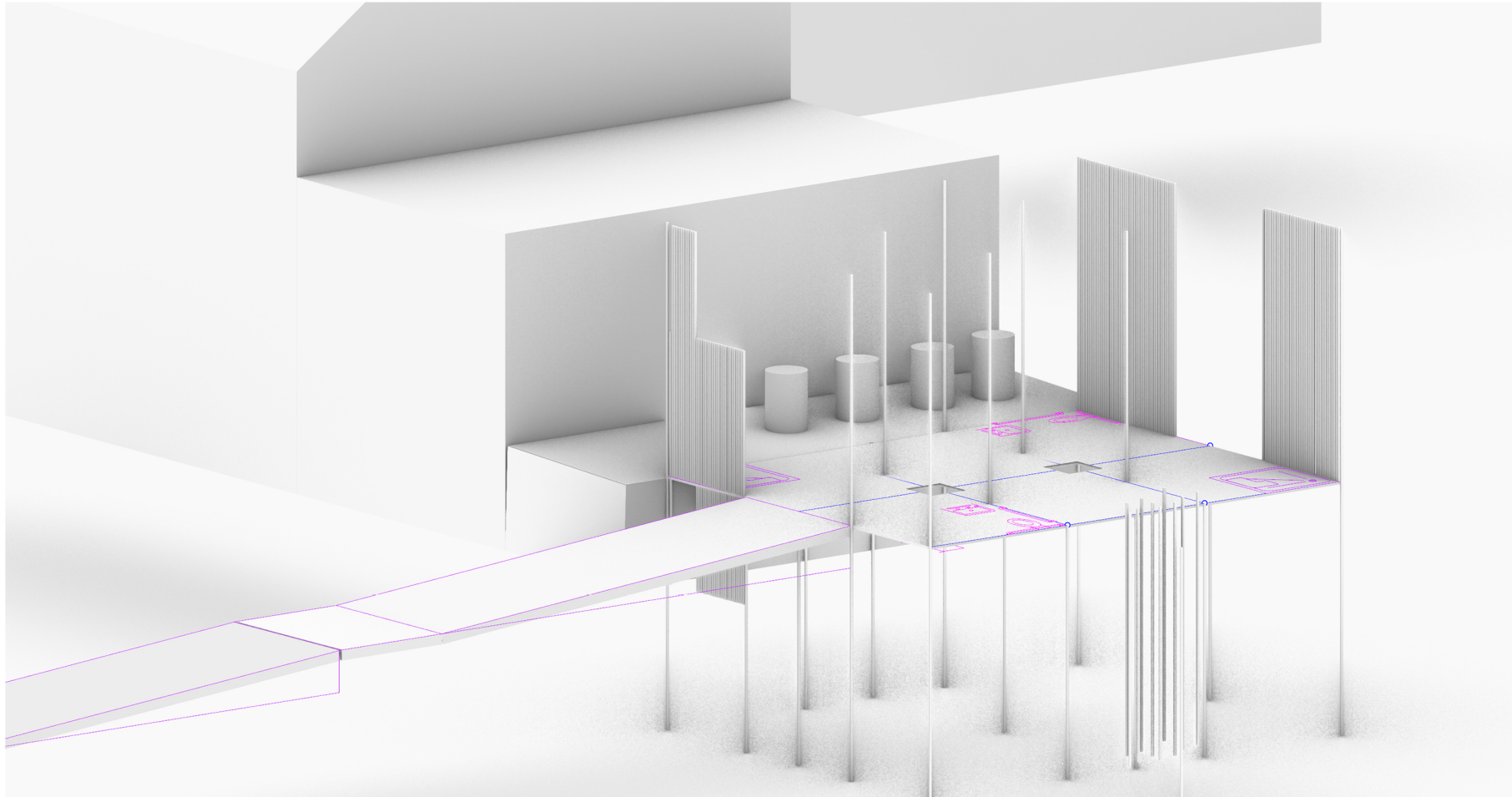
- toilet (compostable)

- check cheapest + most effective toilet
- ADA

West Elevation



Alternative Model.1 Perspective View

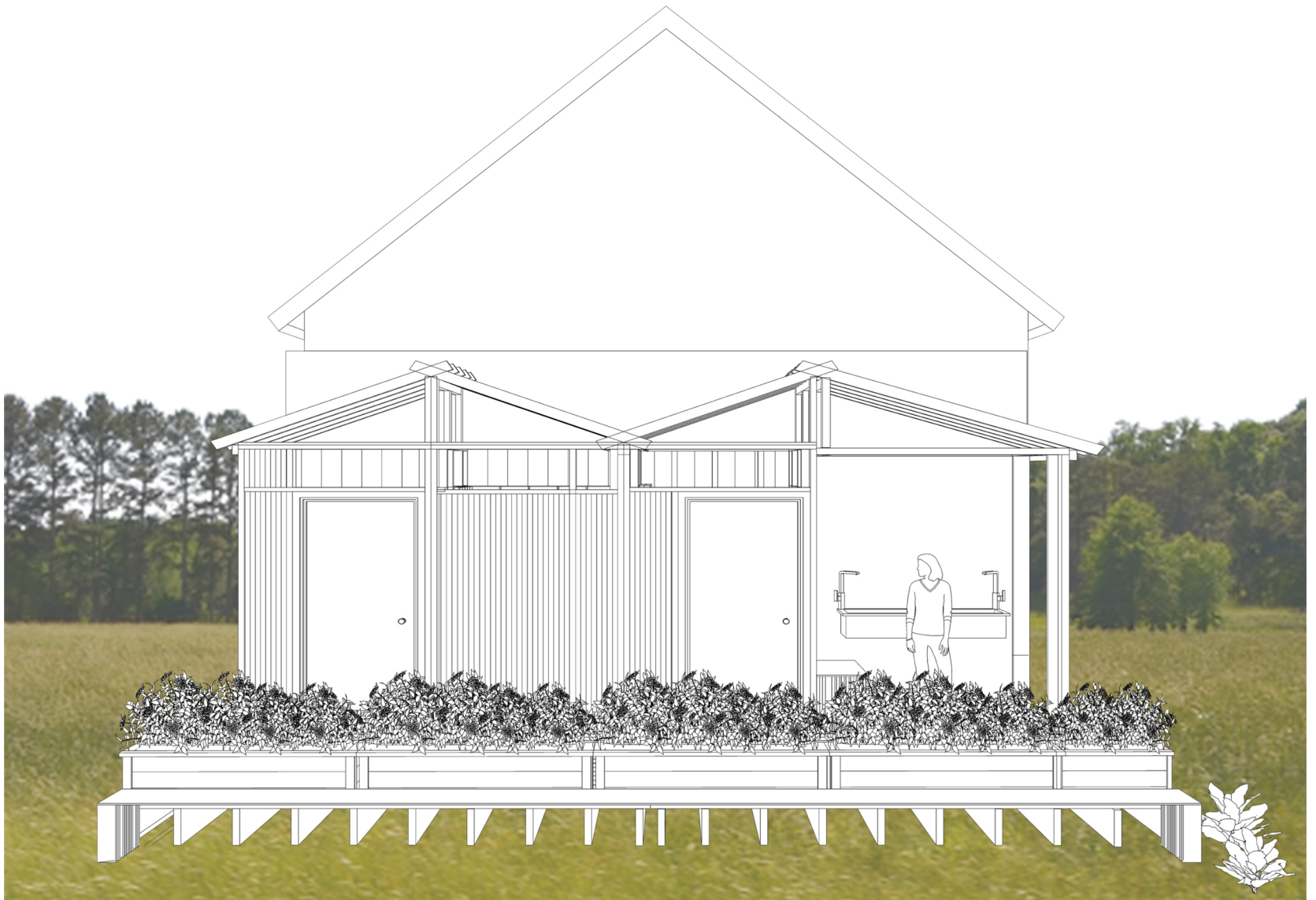


!

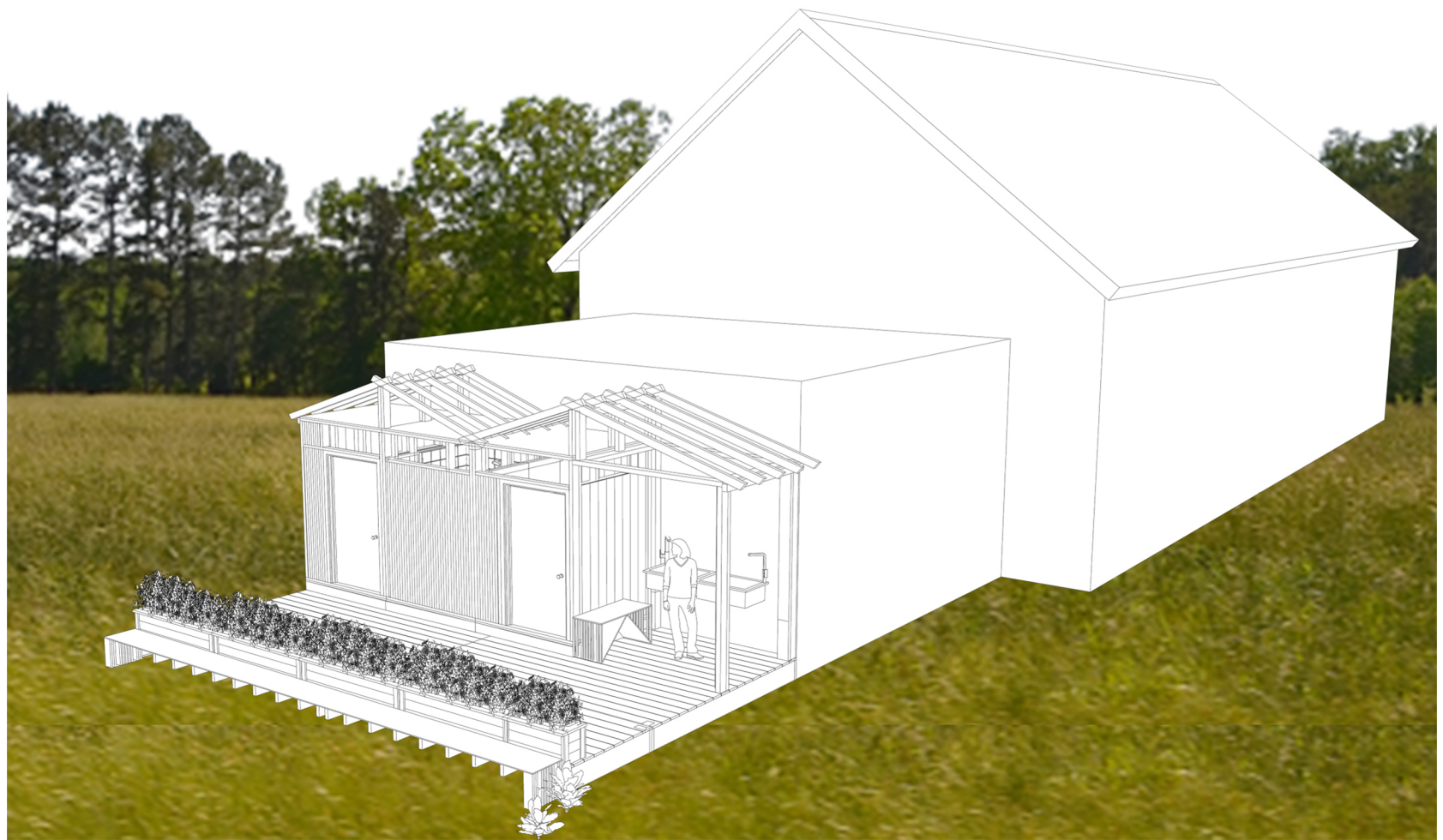
Alternative Model.2 Top View



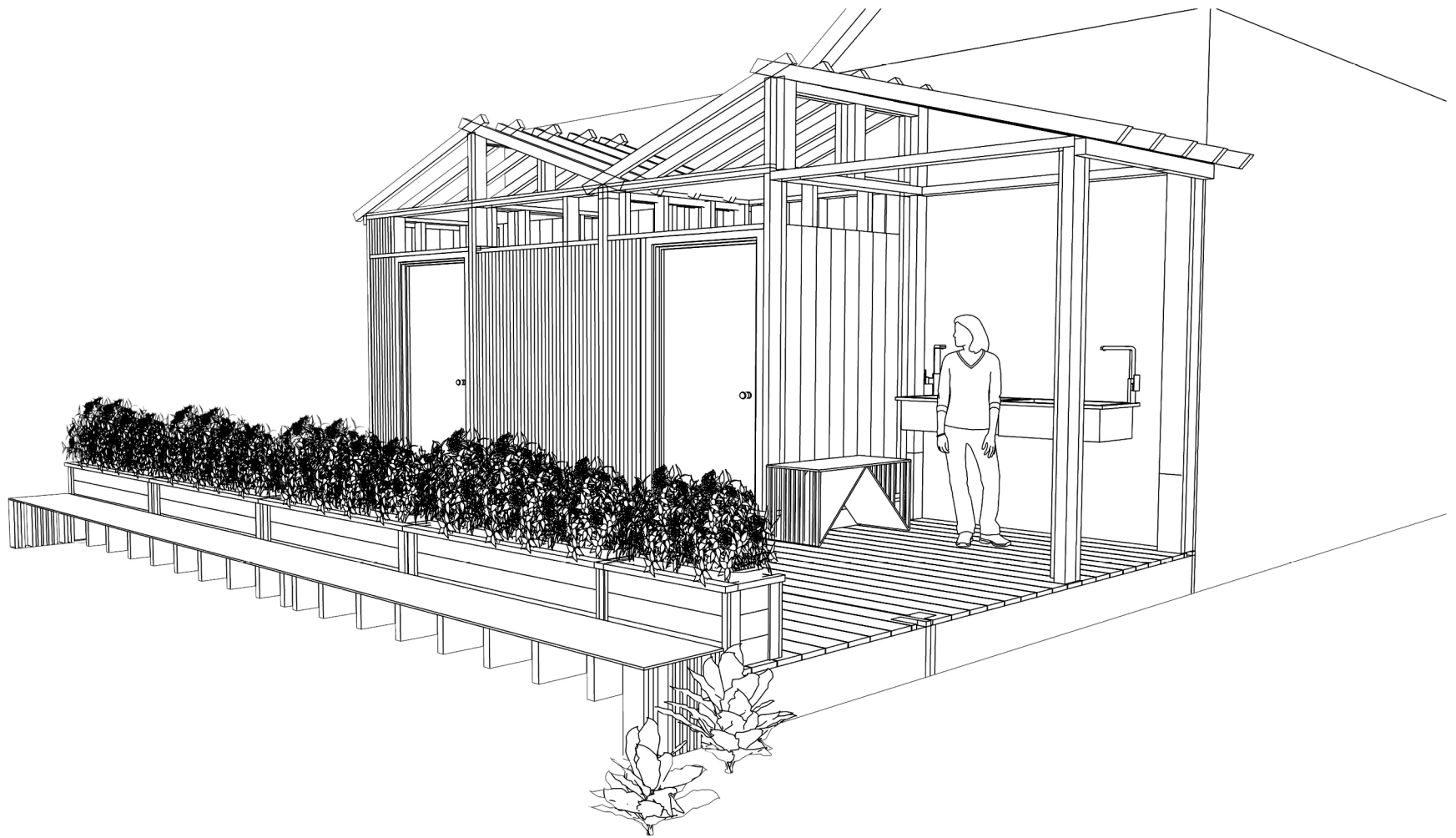
Alternative Model.2 Front View



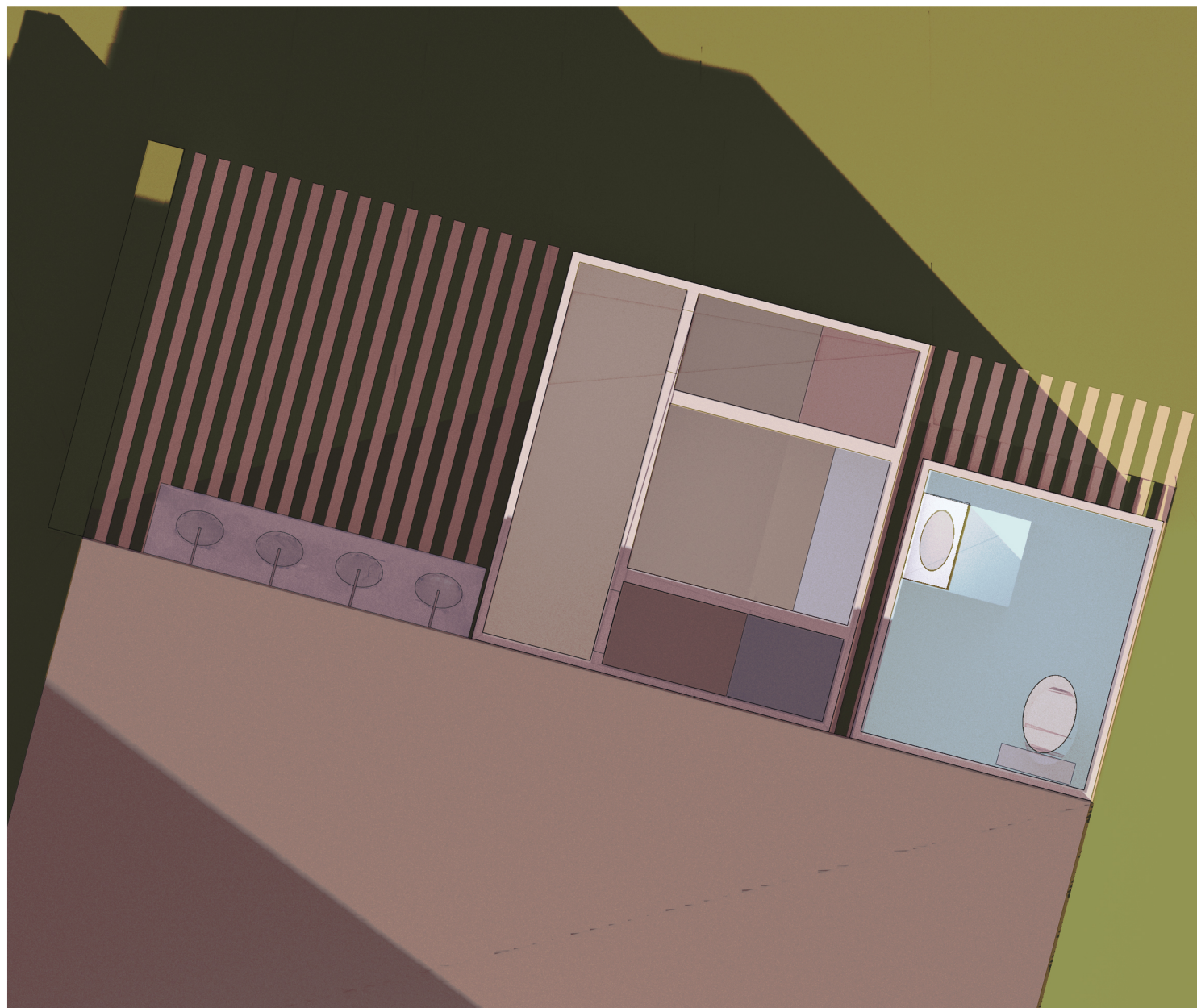
Alternative Model.2 Perspective View



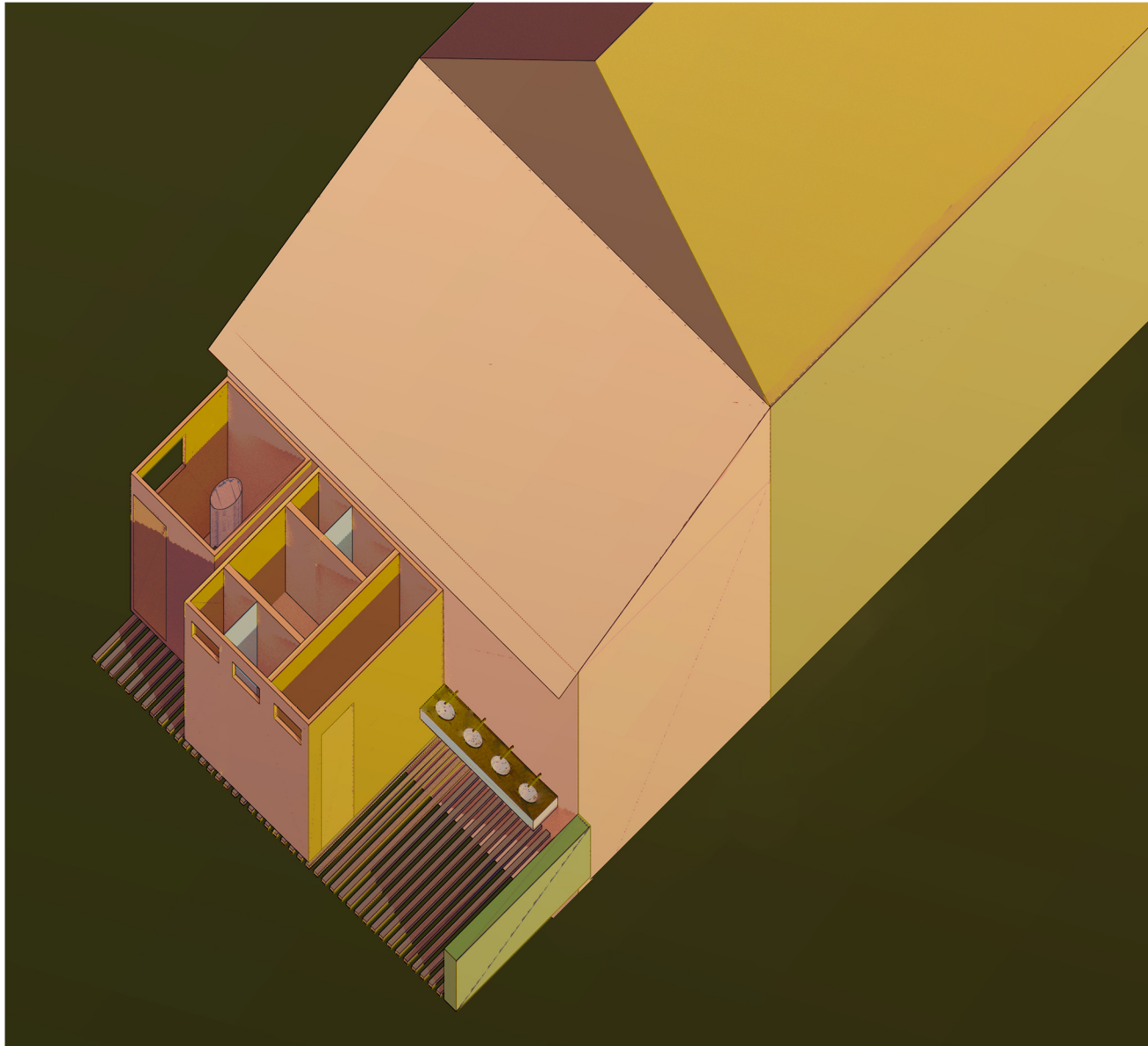
Alternative Model.2 Perspective View



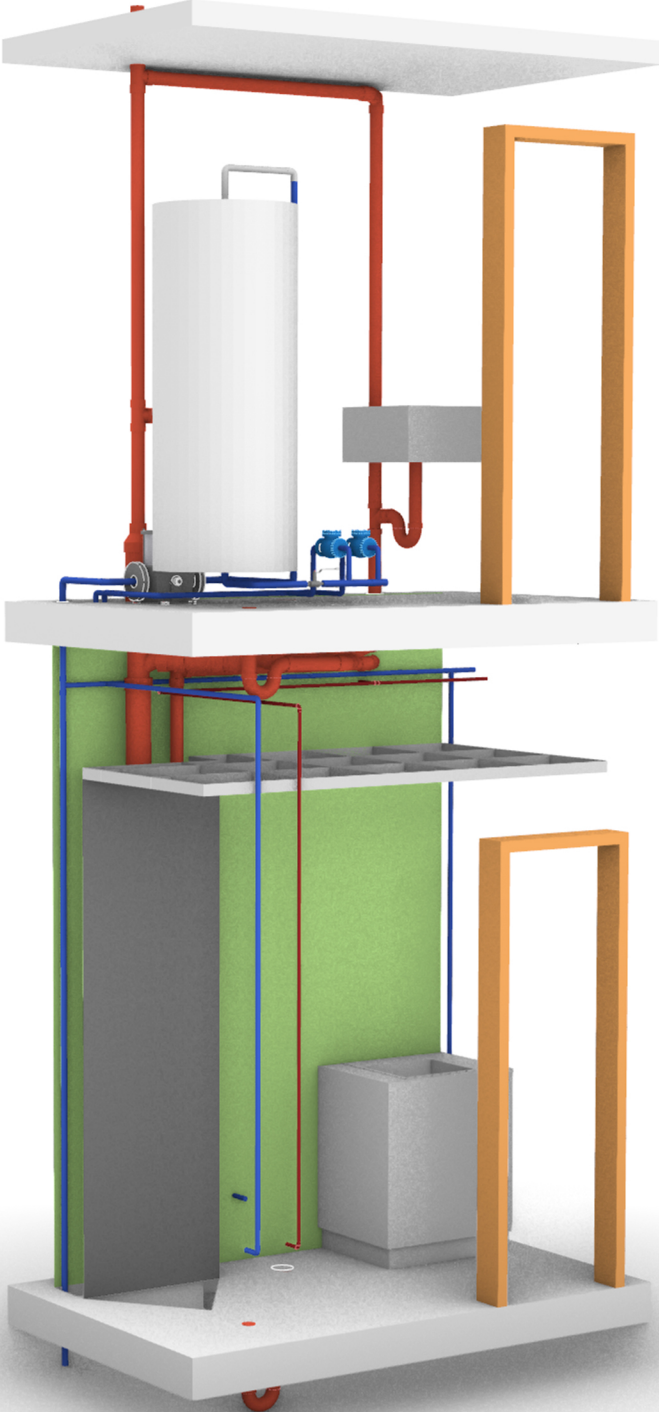
Final Model Top View



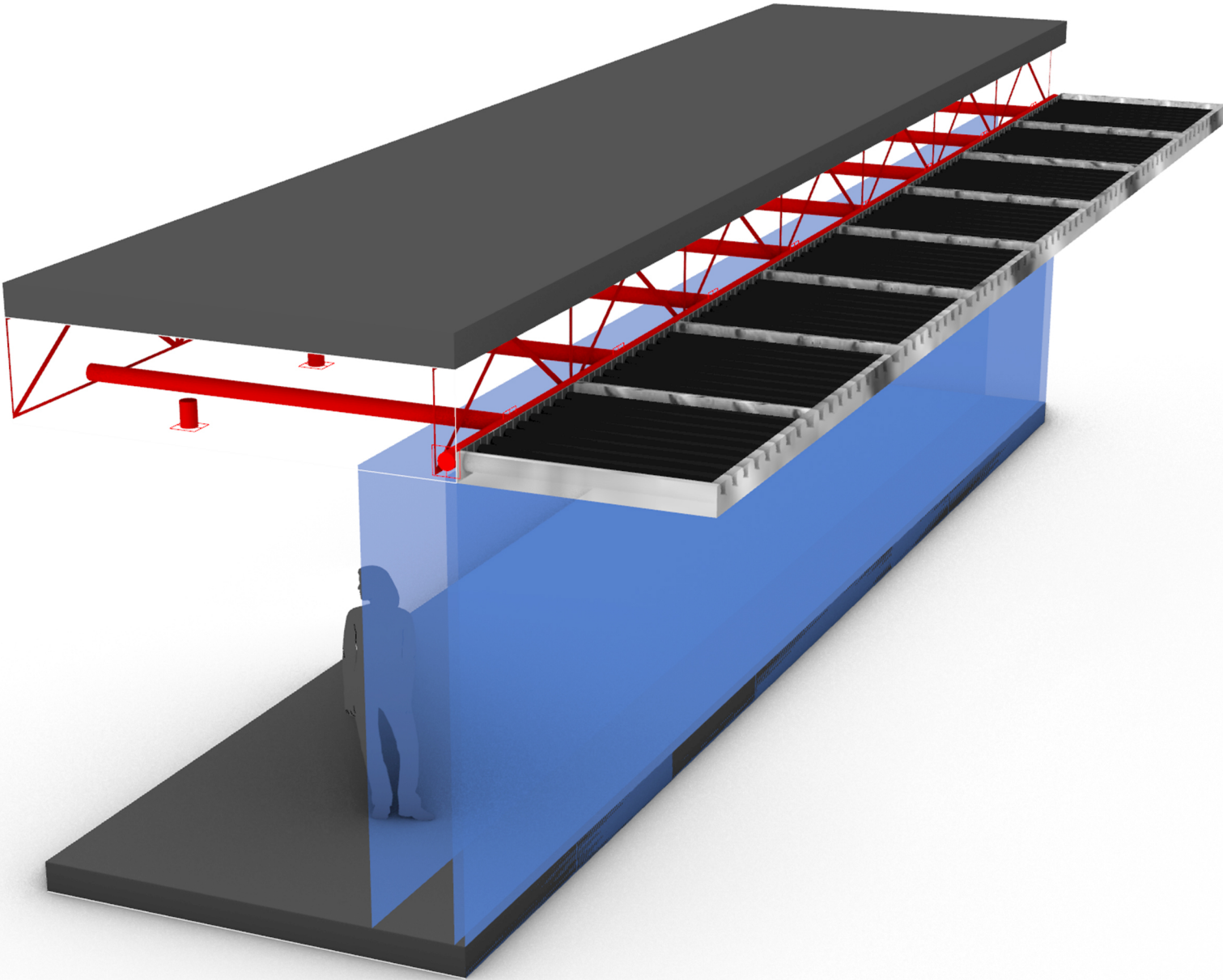
Final Model Perspective View



Final Model Plumbing



Final Model Solar Panels



Final Comments

Thanks to our summer 2020 interns!

Dean Bailey

Aparajita Rao

Vinisha Narendran

Niousha Keyvaninejad

Marco Garcia-Duarte

All intern positions are presently unpaid, college credit and international student work sponsorships are available.

